

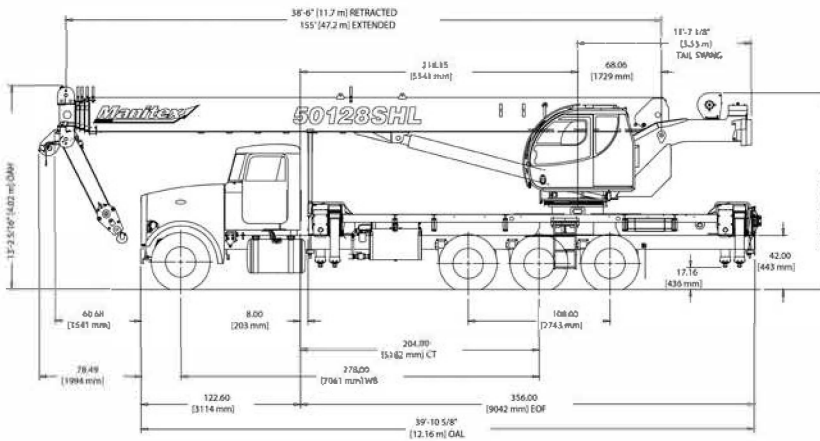
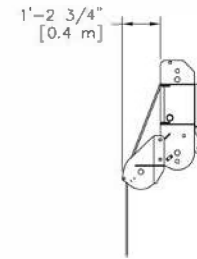
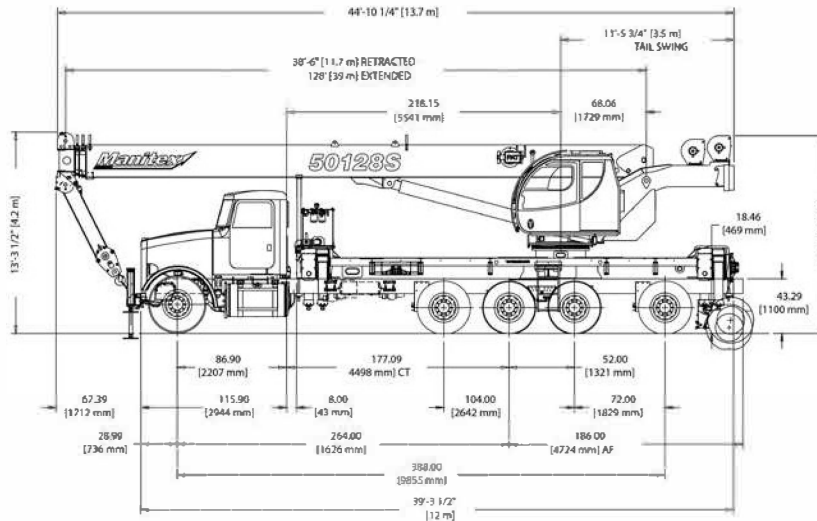
# STERLING CRANE

## 50128S & SHL CHASSIS DATA



### Dimensions

### Auxiliary Sheave Head



### CHASSIS DATA

Model	50128S	50128SHL
Frame section modulus at 180/360° area of operation*	27.0 in <sup>3</sup> 110,000 psi, 758,423 kPa	27.0 in <sup>3</sup> 110,000 psi, 758,423 kPa

\* Frame selection modulus at 360° area of operation requires front bumper stabilizer.

### TRUCK AXLE WEIGHT

Model	50128S	50128SHL
Min. truck axle W - Front**	9,100 lbs. (4,127 kg)	11,100 lbs. (5,034 kg)
Min. truck axle W - Rear**	13,985 lbs. (6,344 kg)	12,500 lbs. (5,670 kg)
Nominal Frame W	34 in. (864 mm)	34 in. (864 mm)

\*\* Minimum chassis weight is required to meet 85% stability requirements. Chassis data is general - not for engineering. Some dimensions depend on truck selection.

### CRANE WEIGHT

Model	50128S	50128SHL
Crane	38,955 lbs. (17,670 kg)	45,379 lbs. (20,584 kg)
Jib fixed	1,510 lbs. (685 kg)	1,510 lbs. (685 kg)
Jib telescopic	1,870 lbs. (848 kg)	1,870 lbs. (848 kg)
Aluminum Platforms	621 lbs. (282 kg)	621 lbs. (282 kg)

Notes: Additional axles required for federal bridge legal configuration - consult Manitex. Manitex highly recommends the addition of a front stabilizer and it may be required on some installations - consult Manitex.

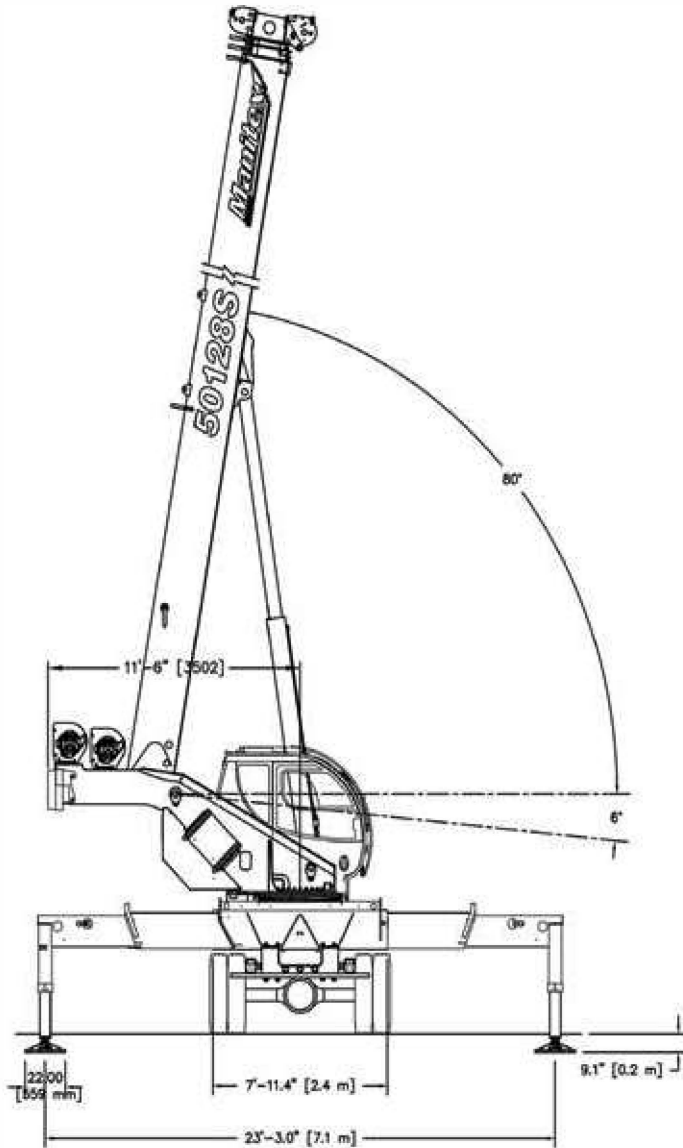
Data published herein is intended as a guide only. Crane operation is subject to machine specific load charts and information.

# STERLING CRANE

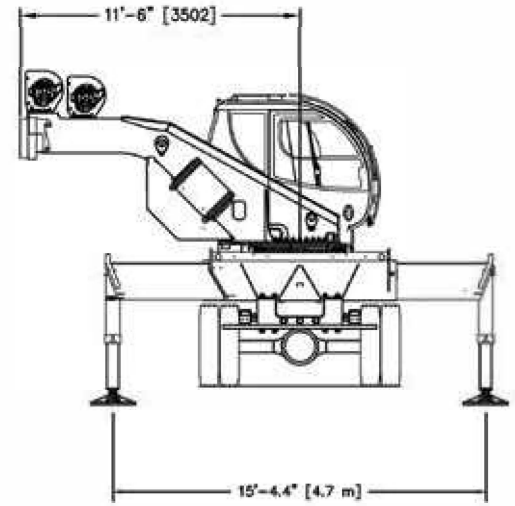
## OUTRIGGER EXTENSION



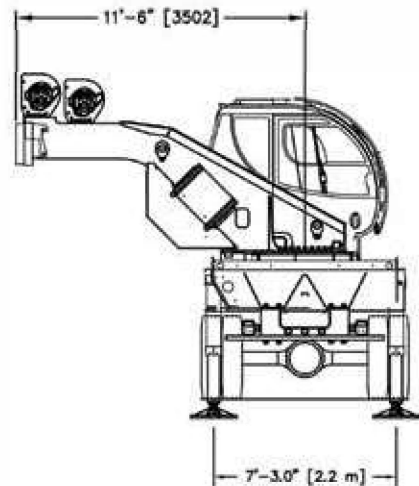
### Full Extension



### Middle Extension



### Full Retraction



## SUB FRAME

- Pedestal sub-frame and stabilizers are mounted to chassis by threaded rods and clamp plates
- Sub-frame: Torsion resistant, rigid 4-plate design mounted under crane full length of truck frame
- Rear under-ride protection: Standard on factory mounted cranes

## ELECTRICAL SYSTEM

- State-of-the-art, weather-resistant components throughout
- Hermetically sealed enclosure includes power in relays and circuit status LEDs

Data published herein is intended as a guide only. Crane operation is subject to machine specific load charts and information.