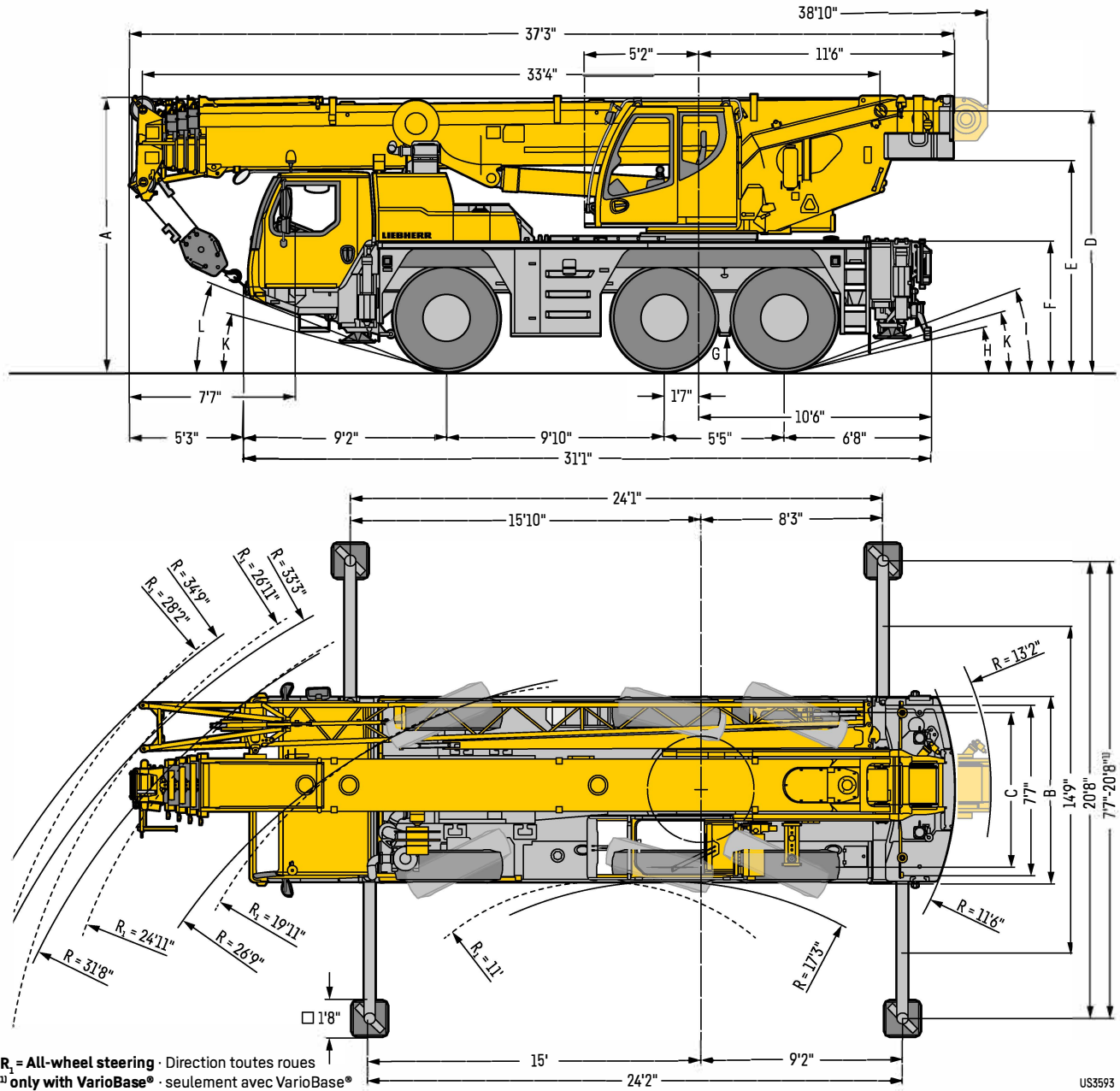


STERLING CRANE



Dimensions Encombremment



Dimensions · Encombremment

	A	A 4"*	B	C	D	E	F	G	H	I	K	L
445/95 R 25 (16.00 R 25)	12'4"	12'	8'4"	6'11"	11'8"	9'5"	5'9"	1'5"	12°	20°	15°	21°
525/80 R 25 (20.5 R 25)	12'4"	12'	8'10"	7'1"	11'8"	9'5"	5'9"	1'5"	12°	20°	15°	21°

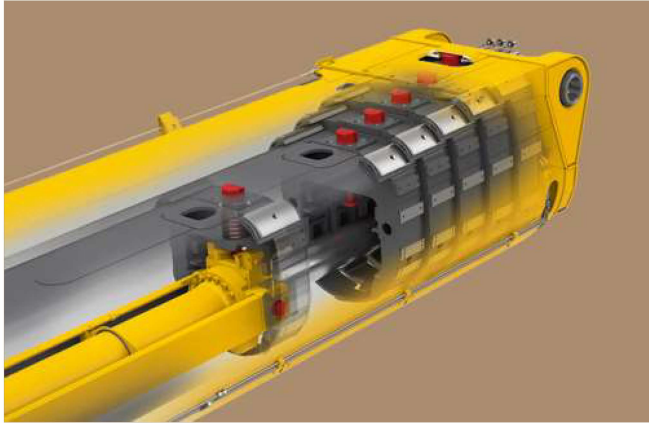
* lowered · abaissé

STERLING CRANE



High performance boom with single cylinder system

Une flèche encore plus puissante avec un système à un vérin



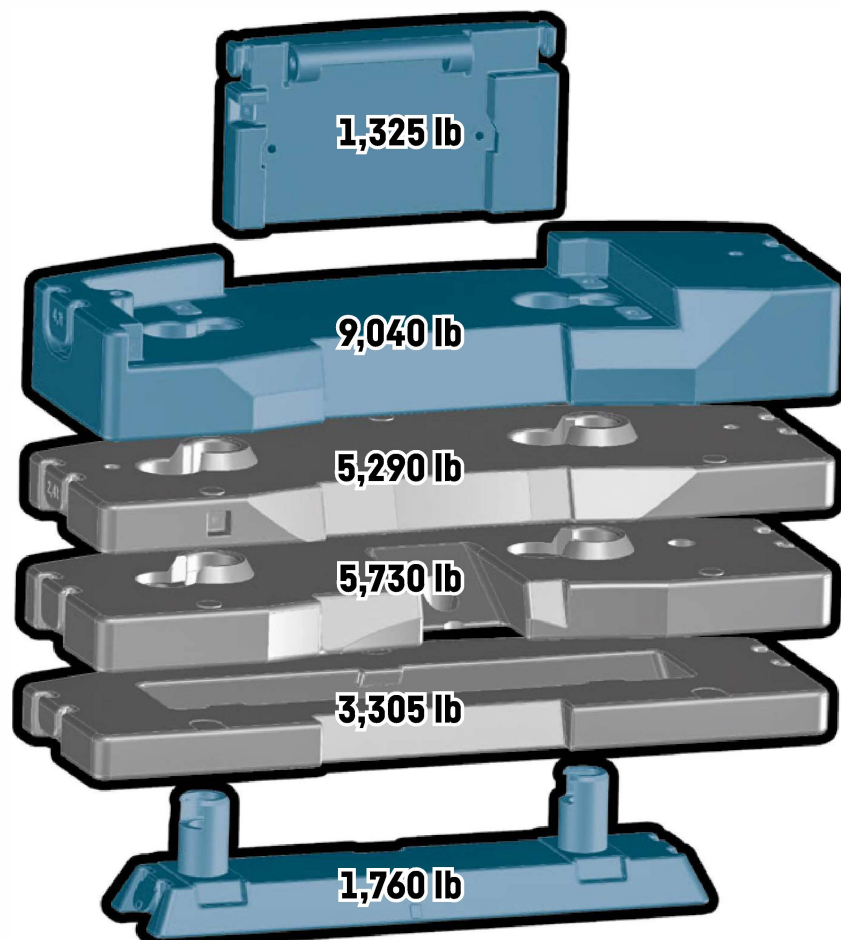
- Automatic fast cycle telescoping system TELEMATIK
- High capacities over the complete working range
- Système de télescopage séquentiel rapide automatique TELEMATIK
- Forces de levage élevées sur l'ensemble de la zone de travail

Counterweight Contrepoids



26,450 lb axle load
26,450 lb de charge par essieu

Technically transportable
Transport techniquement simplifié

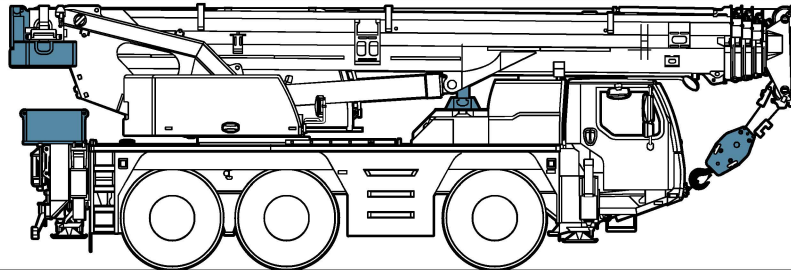


STERLING CRANE



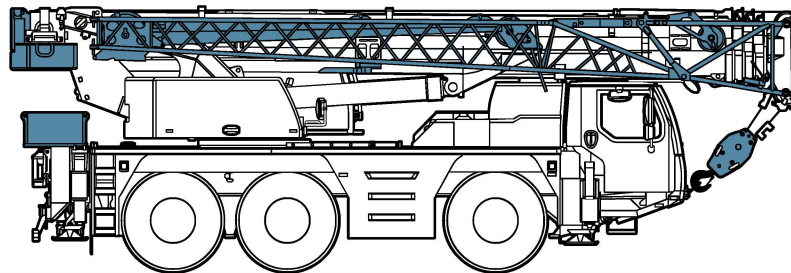
On-road driving

Déplacement sur route



≤ 79,350 lb

≤ 26,450 lb ≤ 26,450 lb ≤ 26,450 lb

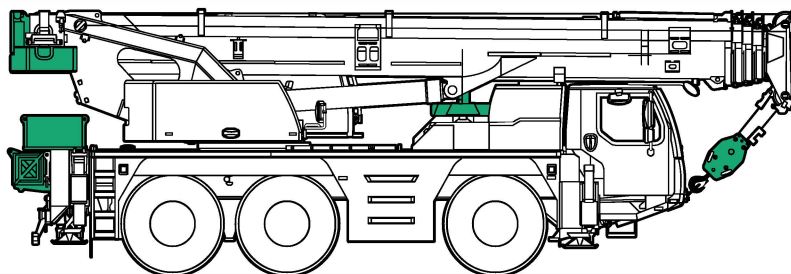


≤ 79,350 lb

≤ 26,450 lb ≤ 26,450 lb ≤ 26,450 lb

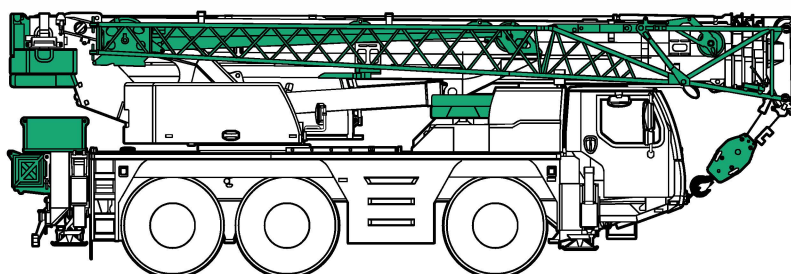
Jobsite driving

Déplacement sur chantier



≤ 83,800 lb

≤ 28,660 lb ≤ 28,660 lb ≤ 28,660 lb



≤ 96,000 lb

≤ 32,000 lb ≤ 32,000 lb ≤ 32,000 lb





STERLING CRANE











Crane data

Dates de la grue

Hook block - Moufles à crochet



			
121,250 lb	7	14	880 lb
101,630 lb	5	10	880 lb
66,580 lb	3	7	620 lb
29,320 lb	1	3	430 lb
9,920 lb	-	1	165 lb

Crane carrier - Châssis porteur









	 min.	 max.	 %		
445/95 R 25 (16.00 R 25)	0.4	53	> 60%		12 / R2
525/80 R 25 (20.5 R 25)	0.4	53	> 60%		4 / R2

Theoretical gradeability - aptitude théorique en pente

Max. supporting forces - Forces d'appui max.

		
Fmax	70,000 lb	111,000 lb

Crane superstructure - Partie tournante

				
0 - 427 ft/min single line - au brin simple	max	15 mm	722 ft	10,100 lb
0 - 427 ft/min single line - au brin simple		15 mm	722 ft	10,100 lb
	0 - 1.3 rpm			
	approx. 60 seconds to reach 83° boom angle env. 60 s jusqu'à 83°			
	approx. 270 seconds for boom extension from 33 ft - 131 ft env. 270 s pour passer de 33 ft - 131 ft			