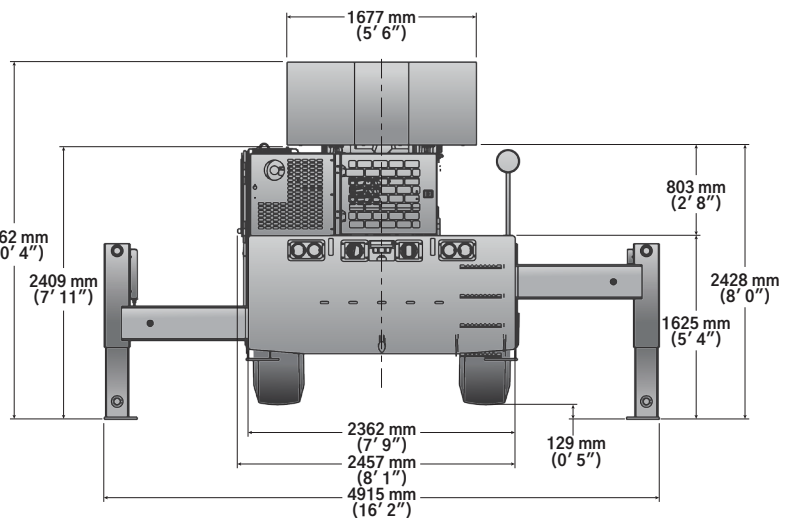
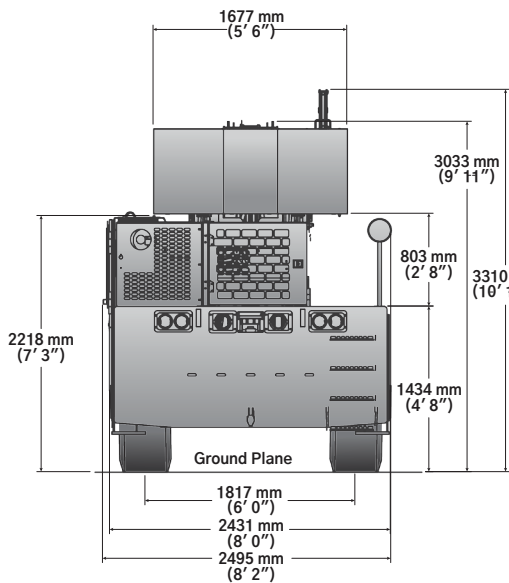
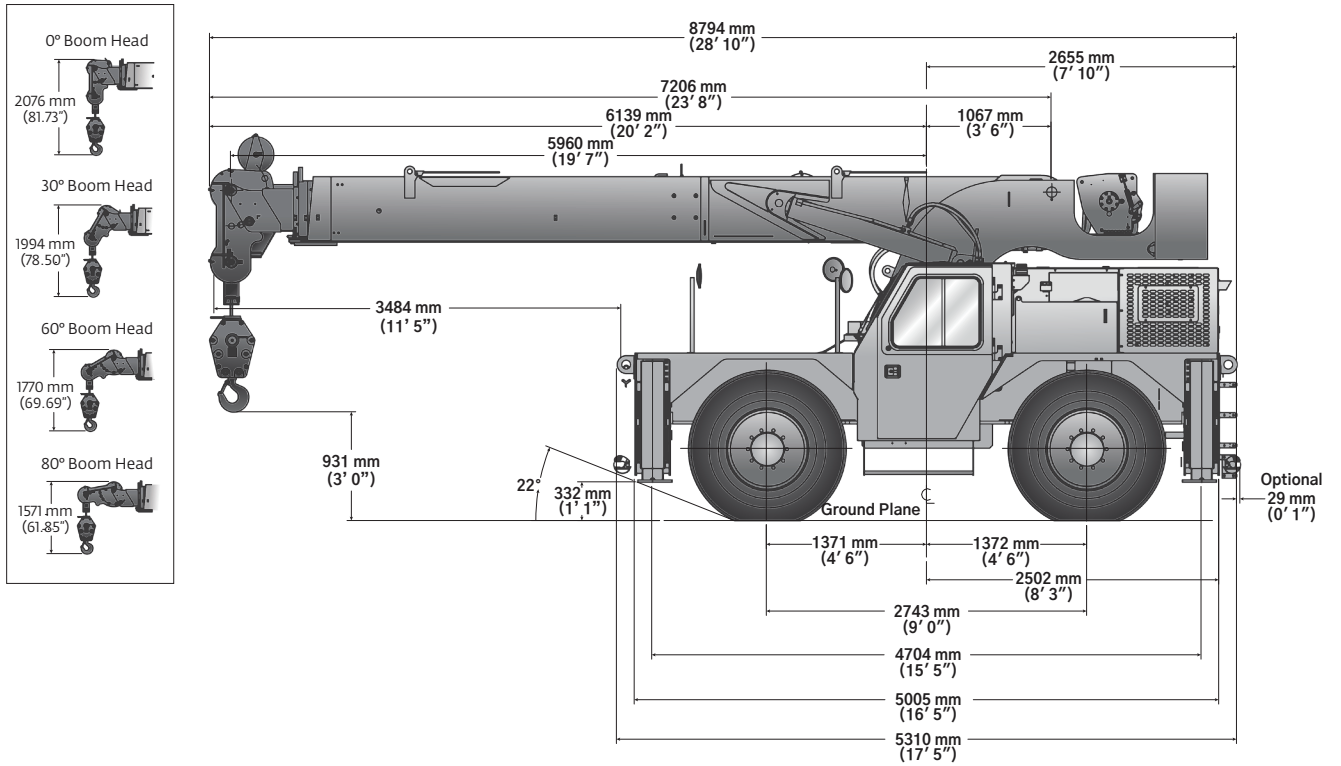


STERLING CRANE

DIMENSIONS AND WEIGHTS

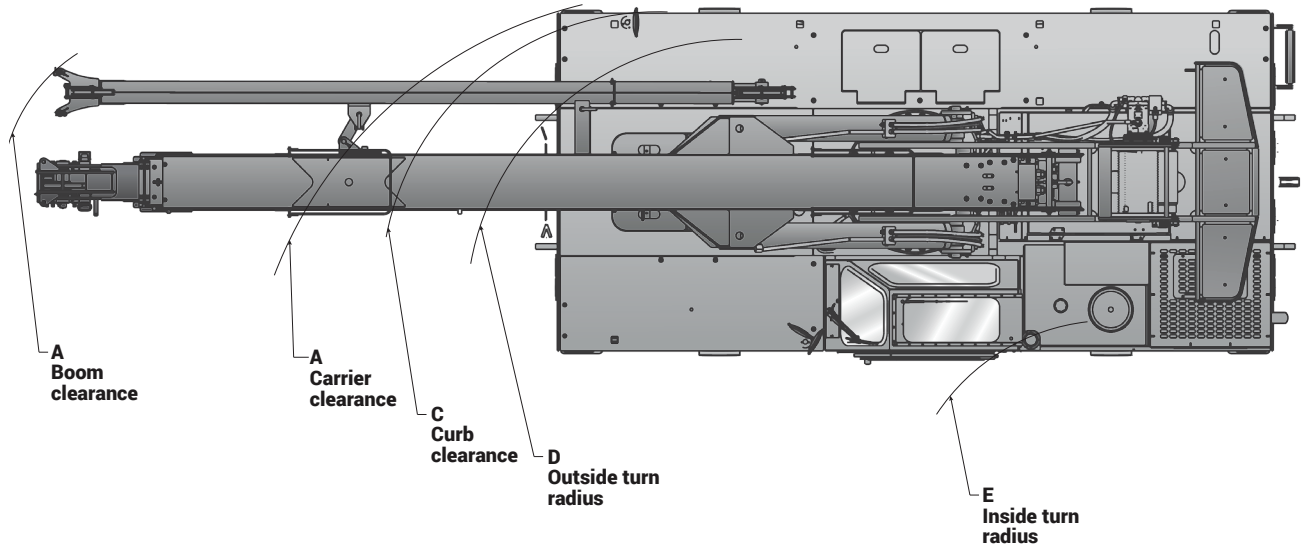


STERLING CRANE

DIMENSIONS AND WEIGHTS



Tire size	A	B	C	D	E	A	B	C	D	E
17.5 x 25	8593 mm (338.3 in)	6178 mm (243.2 in)	5556 mm (218.7 in)	5337 mm (210.1 in)	3813 mm (150.1 in)	7062 mm (278.0 in)	4828 mm (190.1 in)	4454 mm (175.4 in)	4109 mm (161.8 in)	2422 mm (95.3 in)
	Two-wheel steer (radius)					Four-wheel steer (radius)				



Weights	GVW		Front		Rear	
	kg	lb	kg	lb	kg	lb
Basic machine: including 21,6 m (71.0 ft) main boom, hoist with 119,0 m (390 ft) of wire rope, 22,6 t (25 USt) hook block, counterweight, Tier 4 engine, and driver.	20 623	45,465	10 115	22,299	10 508	23,166
Add: 17 ft (5,1 m) fixed swingaway extension and extension carrier brackets and downhaul weight.	255	563	458	1010	-203	-447
Crane Weight	20 878	46,028	10 573	23,309	10 305	22,719
Basic machine: including 71.0 ft (21,6 m) main boom, main hoist with 390 ft (119,0 m) of wire rope, 25 USt (22,6 t) hook block, full counterweight, Tier 4 engine, and driver.	20 623	45,465	10 115	22,299	10 508	23,166
Add: Enclosed cab with heater and defroster.	106	233	47	104	59	129
Crane Weight	20 729	45,698	10 162	22,402	10 567	23,296

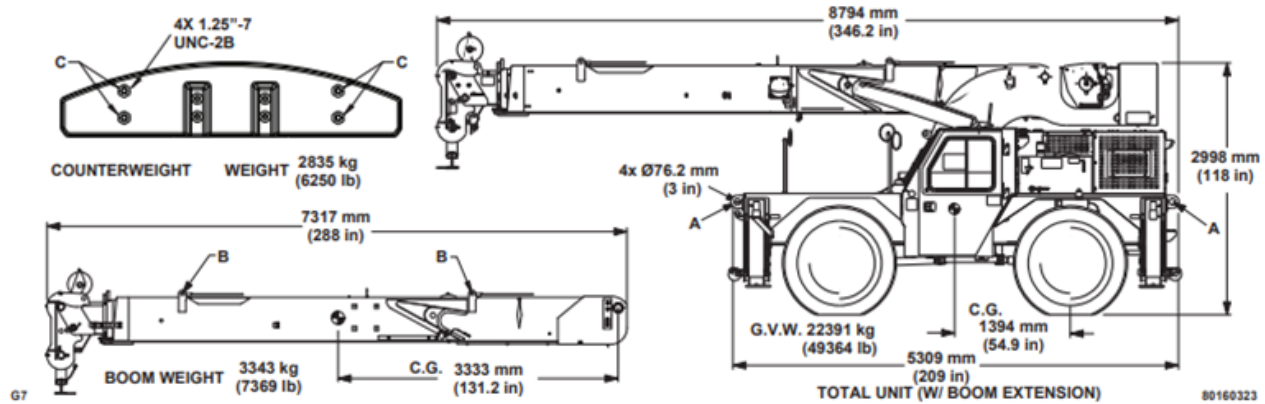
STERLING CRANE



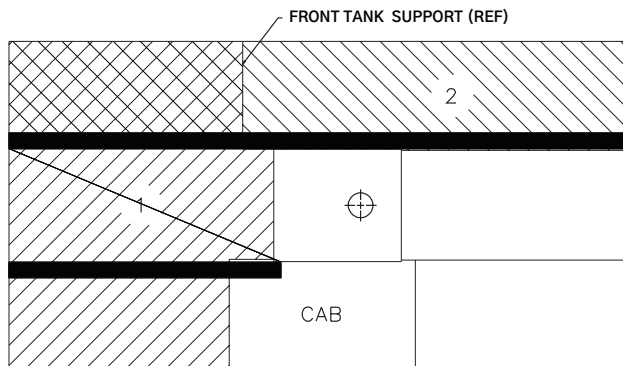
TRANSPORTATION & LIFTING

- Lifting of entire crane or major crane assemblies must be accomplished by utilizing specific fittings indicated on adjacent chart. Use of fittings for purposes other than those designated on chart is prohibited. Fitting capacities are maximum allowable loads per individual fitting.
- Rigging personnel shall be responsible for proper selection and placement of all slings and load handling devices.
- Dimensions and weights shown are estimated for largest configuration available. Weights do not include boom extension and/or jib, unless otherwise indicated.
- Rigging personnel shall verify dimensions as required for clearance.
- Do not use counterweight lift locations or boom sling point for lifting or tie down of entire crane.
- Lifting of the counterweight to be accomplished with a properly rated 1.25" - 7 inch eyebolt.

FITTING	NO. / UNIT	LIFT	TOW	TIE DOWN	BOOM	CWT	CAPACITY TONS (TONNES)						
							LIFT	LIFT	LIFT	TOW	TIE DOWN		
											FORE & AFT	SIDE	DOWN
A	4	X	X	X			10 (9,1)	30 (27,2)	30 (27,2)	1 (0,9)	30 (27,2)		
B	4				X		2 (1,8)						
C	4					X	1 (0,9)						



Load Distribution For Carrydeck



Maximum Allowable Uniformly Distributed Load

AREA 1
13 610 kg
(30,000 lb)

OR

AREA 2
6805 kg
(15,000 lb)

- Maximum travel speed with any or all loads – 4,0 km/h (2.5 mph).
- Loads to be transported on smooth level firm surfaces only.
- Boom must be retracted and in center forward position, and lowered as much as the load allows.
- Pick and carry loads may be transported on either Deck Area 1 or Deck Area 2; combined loading of Deck Area 1 and Deck Area 2 not permitted.
- Lifting is not permitted when carry deck is loaded except for loading and unloading carry deck.
- The maximum pick and carry loads may be transported on Deck Area 1 provided the load is centered over the front axle and cribbed directly on the frame rails.