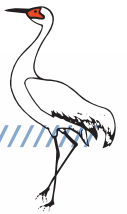


STERLING CRANE

50128SHL LOAD CHART: Main Boom

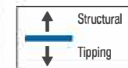


Lifting Capacities 4-section Boom 38.5 ft. - 128 ft. - Full Outrigger Extension

23'-3" (7.07 m) (100%)

Jib (ft.)	Boom Length 38.5 ft.			Boom Length 53 ft. (A)			Boom Length 66 ft. (B)			Boom Length 78 ft. (C)		
	Jib (ft.)	CODE 1 Over Rear (lbs.)	CODE 3 Full 360° (lbs.)	Jib (ft.)	CODE 1 Over Rear (lbs.)	CODE 3 Full 360° (lbs.)	Jib (ft.)	CODE 1 Over Rear (lbs.)	CODE 3 Full 360° (lbs.)	Jib (ft.)	CODE 1 Over Rear (lbs.)	CODE 3 Full 360° (lbs.)
6	73.5	100,000	100,000									
8	70.5	86,600	86,600									
10	67	76,400	76,400	74.5	51,000	51,000	78	51,000	51,000			
12	64	68,400	68,400	72.5	51,000	51,000	76.5	51,000	51,000	79	41,710	41,710
15	59	59,000	59,000	68.5	51,000	51,000	73.5	46,650	46,650	77	37,880	37,880
20	49.5	47,700	47,700	62.5	45,700	45,700	69	39,300	39,300	73	32,140	32,140
25	38.5	38,300	38,300	56	38,400	38,400	64	33,450	33,450	69	27,890	27,890
30	23.5	30,200	30,200	49.5	31,590	31,590	59	29,140	29,140	65	24,230	24,230
35				41.5	26,180	23,590	54	25,490	24,100	61	21,310	21,310
40				32	22,080	18,360	48	22,480	18,860	56.5	19,160	19,150
45				18.5	18,340	14,670	42	19,280	15,190	52	17,070	15,470
50							34.5	16,710	12,460	46.5	15,330	12,740
55							25	14,420	10,350	41	13,850	10,630
60							7	9,790	8,620	35	12,560	8,960
65										27	11,000	7,590
70										16	9,600	6,440
SJ		1,230 lbs.			890 lbs.			720 lbs.			610 lbs.	
EJR		2,840 lbs.			2,620 lbs.			2,500 lbs.			2,430 lbs.	
EJE		3,170 lbs.			2,860 lbs.			2,700 lbs.			2,600 lbs.	

Jib (ft.)	Boom Length 91 ft. (D)			Boom Length 103 ft. (E)			Boom Length 116 ft. (F)			Boom Length 128 ft. (G)		
	Jib (ft.)	CODE 1 Over Rear (lbs.)	CODE 3 Full 360° (lbs.)	Jib (ft.)	CODE 1 Over Rear (lbs.)	CODE 3 Full 360° (lbs.)	Jib (ft.)	CODE 1 Over Rear (lbs.)	CODE 3 Full 360° (lbs.)	Jib (ft.)	CODE 1 Over Rear (lbs.)	CODE 3 Full 360° (lbs.)
15	79	30,000	30,000									
20	76	26,010	26,010	78.5	22,790	22,790						
25	72.5	22,620	22,620	75.5	20,160	20,160	78	17,660	17,660			
30	69.5	20,000	20,000	72.5	18,080	18,080	75.5	16,060	16,060	77.5	13,000	13,000
35	66	17,710	17,710	70.5	16,070	16,070	73	14,480	14,480	75.5	12,760	12,760
40	62.5	15,740	15,740	67.5	14,360	14,360	70.5	13,050	13,050	73	11,760	11,760
45	59	14,050	14,050	64	12,900	12,900	68	11,780	11,780	71	10,800	10,800
50	55	12,620	12,620	60.5	11,610	11,610	65	10,640	10,640	68.5	10,000	10,000
55	50.5	11,380	10,830	57	10,500	10,500	62	9,890	9,890	66	9,130	9,130
60	46.5	10,340	9,160	53.5	9,760	9,290	59	8,970	8,970	63.5	8,320	8,320
65	41.5	9,630	7,800	50	8,860	7,930	56	8,160	8,030	60.5	7,570	7,570
70	36.5	8,770	6,660	46	8,060	6,790	53	7,430	6,900	58	6,910	6,910
75	30	8,000	5,700	41.5	7,350	5,840	49.5	6,780	5,940	55	6,300	6,010
80	22	7,320	4,880	37	6,720	5,020	46	6,180	5,130	52	5,750	5,200
85	7	5,290	4,140	31.5	6,140	4,310	42.5	5,650	4,420	49	5,250	4,490
90				25	5,630	3,690	38	5,160	3,800	46	4,790	3,870
95				15.5	5,160	3,130	33.5	4,720	3,260	42	4,370	3,330
100							28.5	4,310	2,770	38.5	3,980	2,850
105							21.5	3,940	2,330	34	3,620	2,410
110							7.5	3,610	1,920	29.5	3,300	2,020
115										23.5	2,990	1,660
120										15	2,710	1,330
SJ		520 lbs.			460 lbs.			410 lbs.			370 lbs.	
EJR		2,370 lbs.			2,330 lbs.			2,300 lbs.			2,280 lbs.	
EJE		2,520 lbs.			2,460 lbs.			2,410 lbs.			2,380 lbs.	



DEDUCTIONS FROM MAIN BOOM CAPACITIES FOR STOWED JIBS

SJ = Stowed Jib,
EJR = Erected Jib Retracted,
EJE = Erected Jib Extended

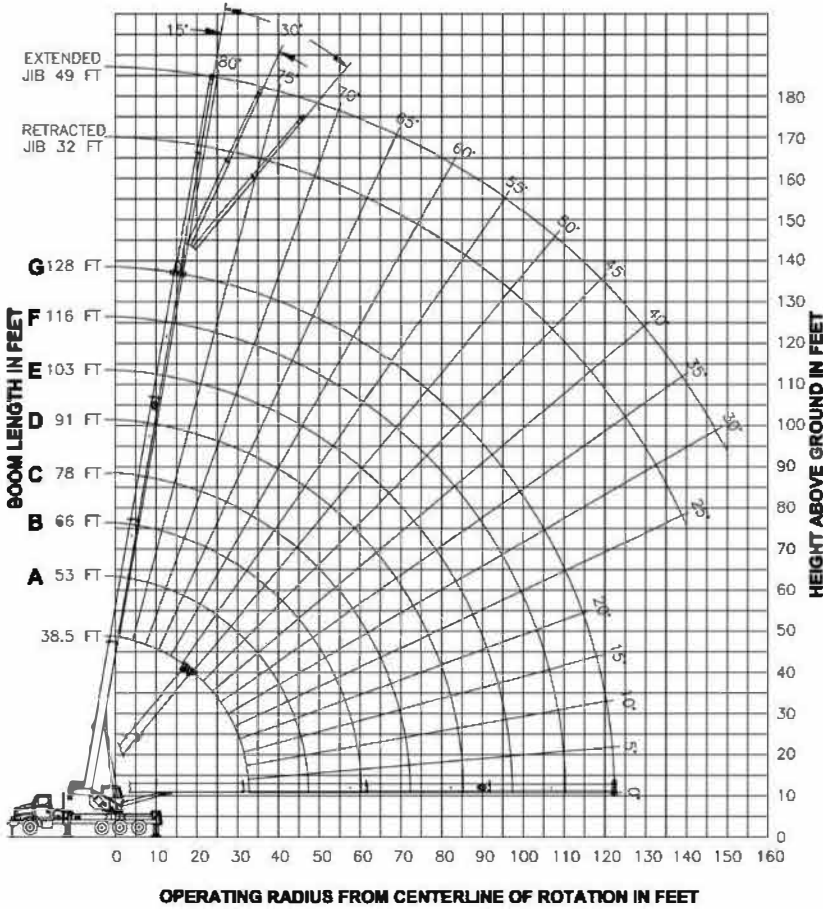
NOTES:


- Loads based on crane on outriggers
- All "on outriggers" loads are based on 85% tipping
- Loads above heavy line are based on structural rating
- Loads below heavy line are based on tipping rating


Data published herein is intended as a guide only. Crane operation is subject to machine specific load charts and information.

STERLING CRANE

50128SHL BOOM DIAGRAM & JIB LOAD CAPACITIES



 23'-3" (7.07 m) (100%)

 23'-3" (7.07 m) (100%)

32 FT. RETRACTED JIB LOAD CAPACITIES								
Boom Length (ft.)	0° Offset		15° Offset		30° Offset		30° Offset	
	Over rear (lbs.)	Full 360° (lbs.)	Over rear (lbs.)	Full 360° (lbs.)	Over rear (lbs.)	Full 360° (lbs.)	Over rear (lbs.)	Full 360° (lbs.)
35	78	5,400	5,400					
40	76.5	5,400	5,400	79.5	5,400	5,400		
45	75	5,400	5,400	78	5,400	5,400		
50	73.5	5,400	5,400	76.5	5,400	5,400	79	5,400
55	72	5,400	5,400	74.5	5,400	5,400	77	5,400
60	70	5,400	5,400	73	5,400	5,400	75	5,400
65	68.5	5,400	5,400	71	5,400	5,400	73	5,240
70	66.5	5,210	5,210	69	5,230	5,230	71.5	4,990
75	64.5	4,740	4,740	67	4,970	4,970	69.5	4,750
80	62.5	4,300	4,300	65	4,570	4,570	67.5	4,520
85	60.5	3,890	3,890	63	4,140	4,140	65	4,310
90	58	3,510	3,510	61	3,740	3,740	63	3,930
95	55.5	3,160	3,150	58.5	3,360	3,360	60.5	3,540
100	53	2,820	2,660	56	3,010	2,960	58	3,170
105	50.5	2,520	2,220	53.5	2,690	2,490	55.5	2,700
110	48	2,230	1,830	50.5	2,390	2,080	52.5	2,250
115	45.5	1,960	1,480	48	2,100	1,700	49.5	1,850
120	42.5	1,700	1,160	45	1,830	1,350	46.5	1,480
125	39.5	1,470	860	42	1,580	1,030	43	1,130
130	36.5	1,240		38.5	1,350		39.5	1,400
135	32.5	1,030		34.5	1,120		35.5	1,160
140	28.5	840		30.5	910		30.5	920

49 FT. EXTENDED JIB LOAD CAPACITIES								
Boom Length (ft.)	0° Offset		15° Offset		30° Offset		30° Offset	
	Over rear (lbs.)	Full 360° (lbs.)	Over rear (lbs.)	Full 360° (lbs.)	Over rear (lbs.)	Full 360° (lbs.)	Over rear (lbs.)	Full 360° (lbs.)
40	78	4,300	4,300					
45	76.5	4,300	4,300					
50	75	4,300	4,300	79.5	4,300	4,300		
55	73.5	4,300	4,300	78	4,300	4,300		
60	72	4,300	4,300	76.5	4,300	4,300	79.5	3,700
65	70.5	4,300	4,300	75	4,300	4,300	78	3,590
70	69	4,300	4,300	73.5	4,230	4,230	76	3,490
75	67.5	4,300	4,300	71.5	4,080	4,080	74	3,390
80	66	4,240	4,240	70	3,930	3,930	72.5	3,300
85	64.5	4,030	4,030	68.5	3,760	3,760	70.5	3,220
90	63	3,740	3,740	66.5	3,590	3,590	69	3,140
95	61	3,430	3,430	64.5	3,420	3,420	67	3,070
100	59	3,120	3,120	62.5	3,270	3,270	65	3,000
105	57	2,840	2,820	60.5	3,100	3,100	63	2,940
110	54.5	2,560	2,420	58	2,810	2,810	61	2,880
115	52	2,310	2,060	56	2,540	2,420	58.5	2,720
120	49.5	2,070	1,740	53.5	2,280	2,070	56	2,320
125	47	1,840	1,440	51	2,040	1,740	53.5	2,190
130	44.5	1,630	1,170	48	1,810	1,440	50.5	1,640
135	42	1,430	920	45.5	1,590	1,160	47.5	1,330
140	39.5	1,240		42.5	1,390	900	44.5	1,040
145	36.5	1,060		39.5	1,190		41	1,260
150	33	900		36	1,000		37	1,050
155				32	820		32.5	850

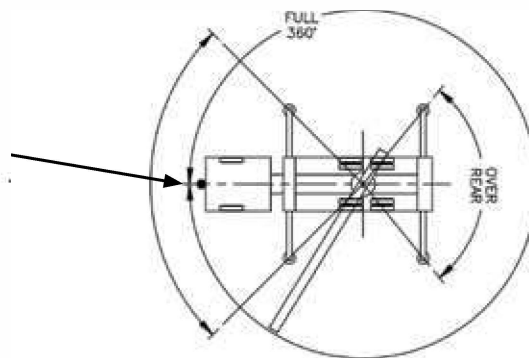
STERLING CRANE



AREA OF OPERATION

In order to take advantage of full 360° operation, the front bumper stabilizer must be set in accordance to the manual before working in this area.

If a front bumper stabilizer was not supplied, then the front tires must be in contact with the ground before working in this area.



Deductions from rated loads for load handling devices supplied by Manitex

Auxiliary block	50 lbs. (22.7 kg)
Overhaul ball	See overhaul ball mfr. nameplate
Load blocks	See load block mfr. nameplate
Hose reel	260 lbs. (117.9 kg)
Swing around jib (stowed)	See load chart

WARNING: Lifting off the main boom point while the jib is erected is not intended nor approved.

LMI OPERATING CODES

Code	Crane Configuration	Outrigger Configuration	Area of Operation
#3	Main Boom	Fully Extended	Full 360°
#5	Main Boom	Fully Retracted	Full 360°
#8	Retracted Jib 0° Offset	Fully Extended	Full 360°
#10	Retracted Jib 15° Offset	Fully Extended	Full 360°
#12	Retracted Jib 30° Offset	Fully Extended	Full 360°

REEVING DIAGRAM

ALLOWABLE LINE PULL										WARNING
1 PART LINE	2 PART LINE	3 PART LINE	4 PART LINE	5 PART LINE	6 PART LINE	7 PART LINE	8 PART LINE	9 PART LINE	10 PART LINE	
										<p>ANTI-TWO-BLOCK SYSTEM MUST BE IN GOOD OPERATING CONDITION BEFORE OPERATING CRANE.</p> <p>REFER TO THE OWNER'S MANUAL.</p> <p>KEEP AT LEAST 3 WRAPS OF LOAD LINE ON THE DRUM AT ALL TIMES.</p>
10000 LBS	20000 LBS	30000 LBS	40000 LBS	50000 LBS	60000 LBS	70000 LBS	80000 LBS	90000 LBS	100000 LBS	