

STERLING CRANE



40124SHL LOAD CHART: Main Boom and Jib

Lifting Capacities 5-section Boom 30.8 ft. - 123.5 ft.

22 ft. (100%)

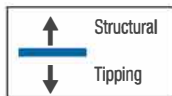
360° Continuous

1 or 2-section Jib 31 ft. - 55 ft. - Full Outrigger Extension

MAIN BOOM LMI CODE 1																			
(ft.)	30.8 ft.		47 ft. (A)		58 ft. (B)		69 ft. (C)		80 ft. (D)		91 ft. (E)		102 ft. (F)		113 ft. (G)		123.5 ft. (H)		
		Load Capacity (lbs.)		Load Capacity (lbs.)		Load Capacity (lbs.)		Load Capacity (lbs.)		Load Capacity (lbs.)		Load Capacity (lbs.)		Load Capacity (lbs.)		Load Capacity (lbs.)		Load Capacity (lbs.)	
5	75	80,000																	
8	69	60,500																	
10	64	52,500	74	25,000															
12	60	46,600	72	25,000	76	25,000	79	25,000											
15	53	39,600	68	25,000	73	25,000	76	25,000	79	21,500									
20	40	31,330	61	25,000	67	25,000	72	23,900	75	19,700	78	17,100	79	14,500					
25	22	24,100	53	24,010	62	22,840	67	21,650	71	18,200	74	15,850	77	13,500	78	10,910	80	8,450	
30			45	20,260	56	19,550	63	18,720	67	16,250	71	14,530	74	12,820	76	10,430	78	8,150	
35			36	15,850	49	16,100	58	16,130	63	14,540	68	12,960	71	11,380	73	9,540	75	7,800	
40			22	12,630	42	12,900	52	13,060	59	13,070	64	11,610	68	10,160	71	8,680	73	7,280	
45					34	10,540	47	10,700	55	10,800	60	10,600	65	9,370	68	8,040	71	6,780	
50					23	8,720	40	8,890	50	9,000	56	9,070	61	8,430	65	7,260	68	6,160	
55							34	7,460	45	7,570	52	7,640	58	7,620	62	6,550	65	5,540	
60							24	6,280	39	6,400	48	6,480	54	6,530	59	5,930	62	5,000	
65							6	5,270	33	5,430	43	5,510	51	5,570	56	5,380	59	4,520	
70									25	4,610	38	4,700	47	4,760	53	4,790	57	4,090	
75									12	3,900	32	4,010	42	4,060	49	4,100	54	3,700	
80											25	3,400	37	3,470	45	3,510	51	3,350	
85											15	2,860	32	2,940	41	2,990	47	3,020	
90													26	2,480	37	2,530	44	2,560	
95													17	2,060	32	2,120	40	2,150	
100															26	1,750	36	1,790	
105															18	1,410	31	1,460	
110																	26	1,160	
115																	19	880	

DEDUCTIONS FROM MAIN BOOM CAPACITIES FOR STOWED JIBS - SFJ = Stowed Fixed Jib, STJ = Stowed Telescopic Jib

	450 lbs.	300 lbs.	240 lbs.	200 lbs.	180 lbs.	160 lbs.	140 lbs.	130 lbs.	120 lbs.
SFJ	450 lbs.	300 lbs.	240 lbs.	200 lbs.	180 lbs.	160 lbs.	140 lbs.	130 lbs.	120 lbs.
STJ	840 lbs.	560 lbs.	450 lbs.	380 lbs.	330 lbs.	290 lbs.	260 lbs.	230 lbs.	210 lbs.



NOTES:

- All loads rated at 360° pick
- Loads based on crane on outriggers
- All "on outriggers" loads are based on 85% tipping
- Loads above heavy line are based on structural rating
- Loads below heavy line are based on tipping rating

Data published herein is intended as a guide only. Crane operation is subject to machine specific load charts and information.

JIB LOAD CAPACITIES						
(ft.)	31 ft. Fixed Jib LMI code #32		30.5 ft. Tele. Jib LMI Code #7		55 ft. Tele. Jib LMI code #13	
		Load Capacity (lbs.)		Load Capacity (lbs.)		Load Capacity (lbs.)
30	80	4,000	79.5	3,300		
35	78	3,850	77.5	3,300	79.5	2,450
40	76	3,700	76	3,300	78	2,450
45	74	3,550	74	3,300	76.5	2,450
50	72	3,400	72	3,300	75	2,450
55	70	3,250	70.5	3,300	73	2,450
60	68	3,080	68.5	3,300	71.5	2,450
65	66	2,910	66.5	3,070	70	2,420
70	64	2,750	64.5	2,750	68	2,260
75	62	2,600	62	2,380	66	2,110

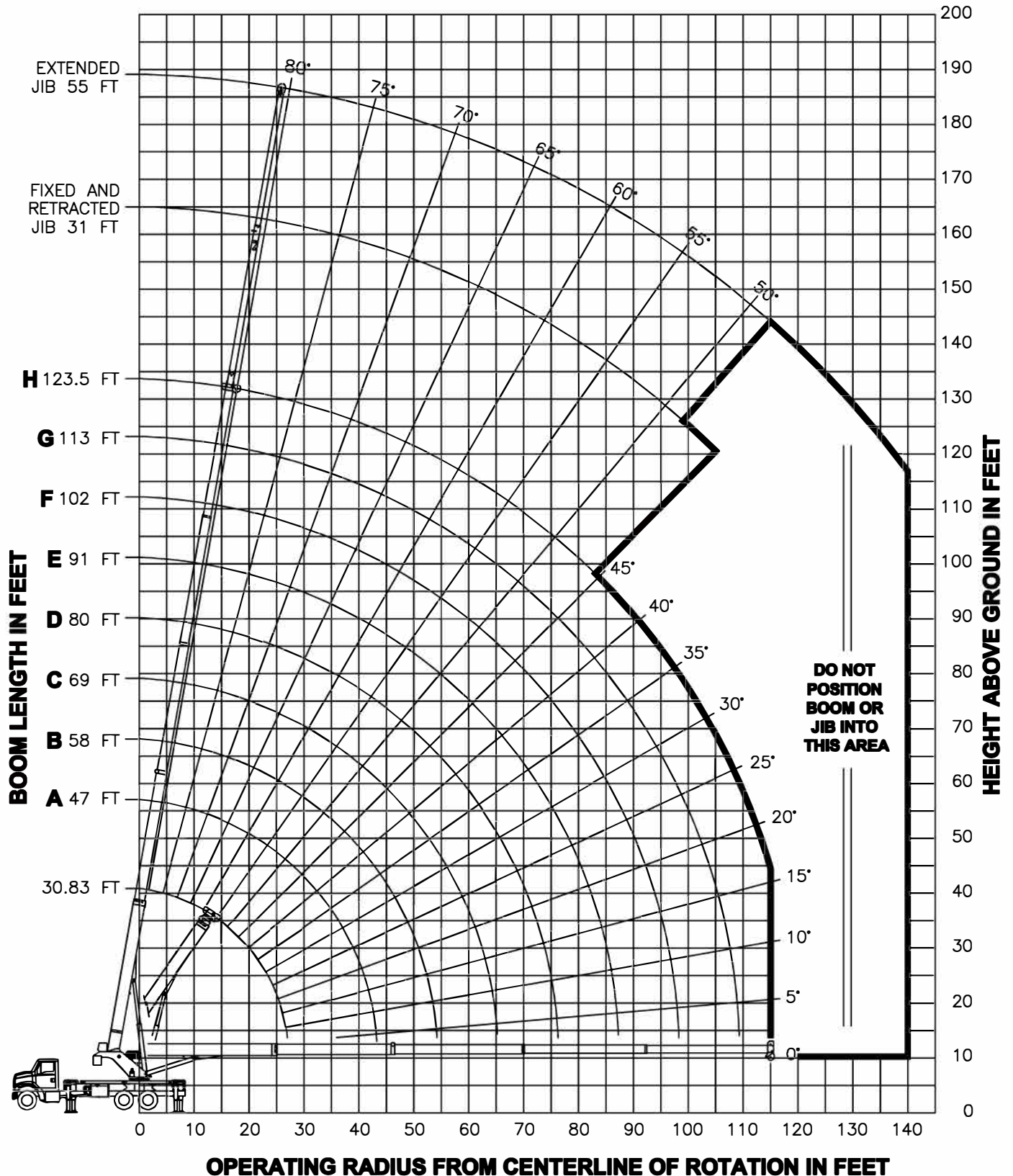
JIB LOAD CAPACITIES						
(ft.)	31 ft. Fixed Jib LMI code #32		30.5 ft. Tele. Jib LMI Code #7		55 ft. Tele. Jib LMI code #13	
		Load Capacity (lbs.)		Load Capacity (lbs.)		Load Capacity (lbs.)
80	60	2,460	60	2,050	64.5	1,940
85	58	2,320	58	1,760	63	1,750
90	55	2,170	55.5	1,500	61	1,580
95	53	1,930	53	1,260	59	1,440
100	51	1,720	50.5	1,050	57	1,280
105	48	1,530	48	850	55	1,100
110	45	1,350			53	930
115	43	1,200			51	770
120	40	1,020				
125	36	800				

STERLING CRANE

40124SHL BOOM DIAGRAM



- FULLY EXTENDED OUTRIGGER CONFIGURATION -



Data published herein is intended as a guide only. Crane operation is subject to machine specific load charts and information.

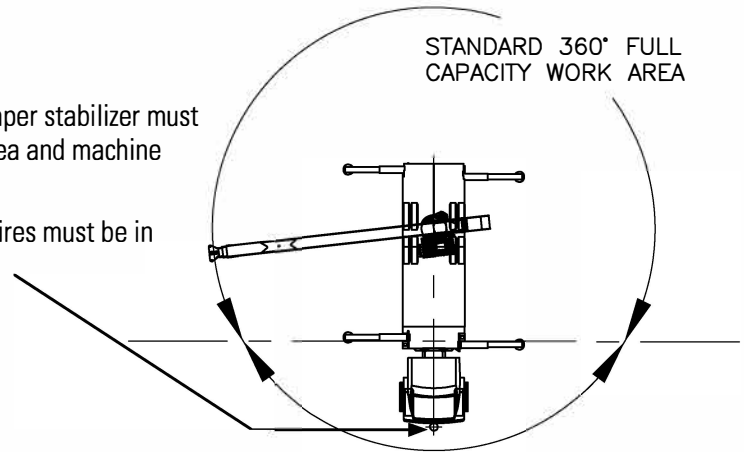
STERLING CRANE



AREA OF OPERATION

In order to take advantage of full 360° rotation, the front bumper stabilizer must be set in accordance to the manual before working in this area and machine must be level.

If a front bumper stabilizer was not supplied, then the front tires must be in contact with the ground before working in this area.



Deductions from rated loads for load handling devices supplied by Manitex

Auxiliary block	50 lbs. (22.7 kg)
Overhaul ball	See overhaul ball mfr. nameplate
Load blocks	See load block mfr. nameplate
Hose reel	260 lbs. (117.9 kg)
Swing around jib (stowed)	See load chart

WARNING: Lifting off the main boom point while the jib is erected is not intended nor approved.

REEVING DIAGRAM

ALLOWABLE LINE PULL								WARNING
1 PART LINE	2 PART LINE	3 PART LINE	4 PART LINE	5 PART LINE	6 PART LINE	7 PART LINE	8 PART LINE	
9500 LBS	19000 LBS	28500 LBS	38000 LBS	47500 LBS	57000 LBS	66500 LBS	76000 LBS	ANTI-TWO-BLOCK SYSTEM MUST BE IN GOOD OPERATING CONDITION BEFORE OPERATING CRANE. REFER TO THE OWNER'S MANUAL. KEEP AT LEAST 3 WRAPS OF LOAD LINE ON THE DRUM AT ALL TIMES.
10000 LBS	20000 LBS	30000 LBS	40000 LBS	50000 LBS	60000 LBS	70000 LBS	80000 LBS	

Data published herein is intended as a guide only. Crane operation is subject to machine specific load charts and information.