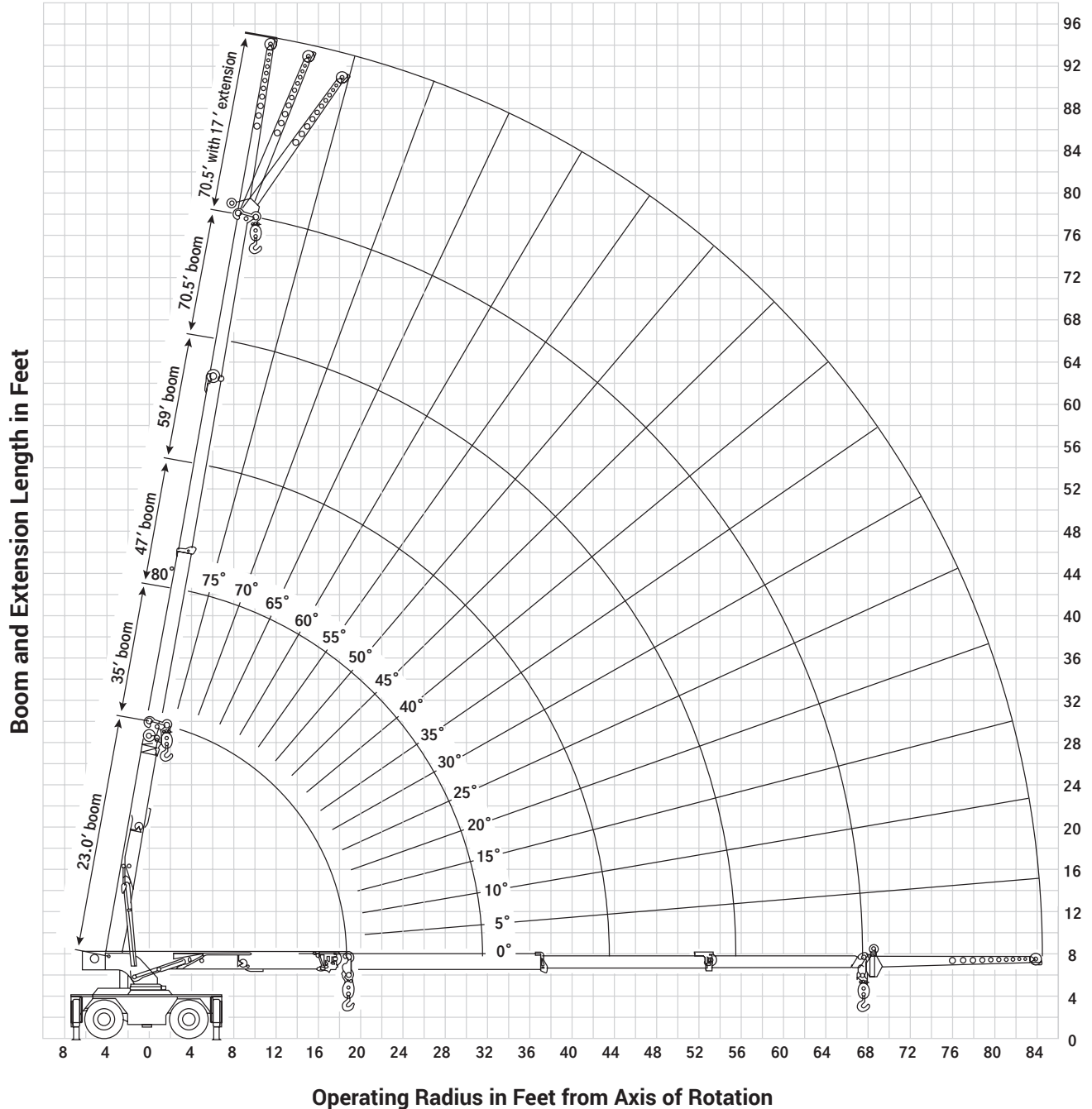




WORKING RANGE

Imperial 85%



THIS CHART IS ONLY A GUIDE AND SHOULD NOT BE USED TO OPERATE THE CRANE.

The individual crane's load chart, operating instructions and other instructional plates must be read and understood prior to operating the crane

STERLING CRANE

LOAD CHART



Imperial 85%

23 ft - 70.5 ft
 4,700 lb
 100%
 360° /
 0%
 Front/Rear ± 15° define arc

23 ft - 70.5 ft
 4,700 lb
 0%
 360°



Pounds

Feet	23	35	47	59	70.5
8.5	50,000 (64.5)	34,300 (73.5)	33,600 (78.5)		
10	38,750 (60)	34,500 (71)	33,000 (76.5)	27,800 (80)	
12	34,850 (54)	31,400 (67)	29,250 (74)	25,900 (78)	
14	31,250 (47)	28,450 (63.5)	26,350 (71)	24,100 (76)	18,200 (79)
16	26,700 (39)	26,050 (59.5)	24,000 (68.5)	22,400 (74)	16,750 (77.5)
18	23,150 (29)	23,500 (55.5)	22,100 (66)	20,750 (72)	15,500 (75.5)
19.5	21,000 (0)	21,350 (52)	20,900 (63.5)	19,550 (70.5)	14,650 (74.5)
22		18,450 (46)	18,600 (60)	17,850 (67.5)	13,400 (72)
24		16,650 (41)	16,750 (57)	16,300 (65)	12,500 (70.5)
26		14,600 (36)	14,850 (54)	14,200 (63)	11,750 (68.5)
28		12,750 (29)	13,050 (51)	13,150 (60.5)	11,050 (67)
30		11,250 (20)	11,600 (47.5)	11,700 (58.5)	9,800 (65.5)
31.5		10,300 (0)	10,650 (45)	10,750 (56.5)	9,400 (64)
34			9,350 (40)	9,480 (53.5)	8,850 (61.5)
36			8,460 (36)	8,590 (51)	8,400 (60)
38			7,680 (31)	7,830 (48.5)	7,940 (57)
40			7,000 (25)	7,150 (45.5)	7,270 (55)
42			6,400 (17.5)	6,550 (42.5)	6,680 (53)
43.5			6,000 (0)	6,000 (40.5)	6,270 (51.5)
46				5,440 (36)	5,680 (48.5)
48				5,040 (32.5)	5,250 (46.5)
50				4,680 (28)	4,860 (44)
52				4,350 (23)	4,510 (41.5)
54				4,040 (16)	4,190 (38.5)
55.5				3,820 (0)	3,960 (36.5)
58					3,620 (32.5)
60					3,370 (29)
62					3,130 (25)
64					2,920 (20)
66					2,720 (13)
67					2,620 (0)

Feet	23	35	47	59	70.5
8.5	26,350 (63.5)	24,000 (73)	21,900 (78)		
10	20,800 (59)	19,300 (70.5)	17,900 (76)	16,650 (79.5)	
12	16,000 (52.5)	15,100 (67)	14,200 (73.5)	13,350 (77.5)	
14	12,300 (45.5)	12,250 (63)	11,600 (71)	11,000 (75.5)	10,500 (79)
16	9,850 (37)	10,150 (59.5)	9,710 (68.5)	9,280 (73.5)	8,870 (77)
18	8,070 (26)	8,370 (55.5)	8,230 (65.5)	7,910 (71.5)	7,590 (75.5)
19.5	7,090 (0)	7,300 (52)	7,330 (63.5)	7,060 (70)	6,810 (74)
22		5,900 (46.5)	6,050 (60)	5,900 (67.5)	5,720 (72)
24		5,040 (41.5)	5,170 (57)	5,150 (65)	5,000 (70)
26		4,330 (36)	4,450 (54)	4,520 (63)	4,400 (68.5)
28		3,740 (29)	3,850 (51)	3,930 (60.5)	3,880 (66.5)
30		3,250 (20)	3,340 (47.5)	3,410 (58.5)	3,420 (65)
31.5		2,910 (0)	3,010 (45)	3,080 (56.5)	3,120 (63.5)
34			2,530 (40)	2,590 (53.5)	2,640 (61)
36			2,200 (36)	2,260 (51)	2,310 (59)
38			1,910 (31)	1,960 (48.5)	2,010 (57)
40			1,660 (25)	1,700 (45.5)	1,750 (55)
42			1,410 (17.5)	1,470 (42.5)	1,510 (53)
43.5			1,230 (0)	1,310 (40.5)	1,350 (51.5)
46				1,070 (36)	1,110 (48.5)
48				890 (32.5)	930 (46.5)
50				720 (28)	780 (44)
52				570 (23)	630 (41.5)
54				430 (16)	500 (38.5)
55.5				330 (0)	410 (36.5)
58					270 (32.5)

*NOTE: () Boom angles are in degrees.

THIS CHART IS ONLY A GUIDE AND SHOULD NOT BE USED TO OPERATE THE CRANE.




The individual crane's load chart, operating instructions and other instructional plates must be read and understood prior to operating the crane

STERLING CRANE

LOAD CHART



Imperial 85%

 17 ft
  4,700 lb
  100%
  360°


 Pounds

Main Boom Angle (°)	15 ft Length				
	0° OFFSET		15° OFFSET		30° OFFSET
	Up to 59' boom length	Up to 70.5' boom length	Up to 59' boom length	Up to 70.5' boom length	Any boom length
80	--	--	5,000	5,000	3,500
75	7,500	--	4,400	4,400	3,100
70	6,100	--	3,900	3,900	2,800
65	5,000	4,600	3,500	3,500	2,550
60	4,300	3,800	3,150	3,150	2,350
55	3,800	3,300	2,850	2,850	2,200
50	3,400	2,900	2,600	2,600	2,100
45	3,050	2,600	2,400	2,400	2,000
40	2,800	2,400	2,250	2,250	1,950
35	2,600	2,150	2,150	2,050	1,900
30	2,400	1,930	2,080	1,850	1,830
25	2,300	1,750	2,050	1,720	--
20	2,200	1,600	2,000	1,590	--
15	2,100	1,500	1,950	1,520	--
10	2,050	1,460	--	--	--
5	2,020	1,450	--	--	--
0	2,000	1,440	--	--	--

NOTES:

- 17 ft boom extension may be used for single line lifting service only.
- WARNING:** Operation of this machine with heavier loads than the capacities listed is strictly prohibited. Machine tipping with boom extension occurs rapidly and without advance warning.

THIS CHART IS ONLY A GUIDE AND SHOULD NOT BE USED TO OPERATE THE CRANE.

The individual crane's load chart, operating instructions and other instructional plates must be read and understood prior to operating the crane

STERLING CRANE

LOAD CHART



Imperial 85%

23 ft - 70.5 ft
 4,700 lb
 Stationary
 Define Arc Over Front /
 Stationary
 360° /
 Pick & Carry
 Over Front

Pounds

Radius in Feet	Defined Arc 15° Over Front	Stationary 360°
6	30,000	21,000
8	24,900	17,900
10	21,000	15,900
12	18,000	13,000
14	15,650	10,000
16	13,300	7,920
18	10,900	6,410
20	9,460	5,780
22	8,060	4,880
24	6,960	4,140
26	6,050	3,520
28	3,500	2,990
30	4,670	2,540
32	4,130	2,160
34	3,670	1,820
36	3,260	1,530
38	2,900	1,270
40	2,590	1,040
42	2,300	830
44	2,280	720
46	2,050	610
48	1,840	500
50	1,650	390
52	1,480	280
54	1,320	--
56	1,220	--
58	1,080	--
60	950	--
62	840	--
64	730	--
66	620	--
67	570	--

NOTES:

1. Capacities are in pounds and do not exceed 75% of tipping loads as determined by test in accordance with SAE J765.
2. Capacities are applicable to machines equipped with 17.5x25 at 110 psi cold inflation pressure.
3. Capacities are applicable only with machine on a smooth, level and firm surface.
4. Defined Arc - Over front includes 15° on either side of longitudinal centerline of machine.
5. All rubber lifting depends on proper tire inflation, capacity and condition. Capacities must be reduced for lower tire inflation pressures. Damaged tires are hazardous to safe operation of crane.
6. For pick and carry operation, the boom, using the shortest practical boom length, must be centered over front of machine. Maximum speed is 2.5 mph.
7. On rubber lifting with boom extension not permitted.

THIS CHART IS ONLY A GUIDE AND SHOULD NOT BE USED TO OPERATE THE CRANE.

The individual crane's load chart, operating instructions and other instructional plates must be read and understood prior to operating the crane

STERLING CRANE

LOAD HANDLING



Weight Reductions for Load Handling Devices

17 ft (5,2 m) Fixed Offsettable Extension	
*Stowed	N/A
*Erected	1,120 lb (508 kg)
*Reduction of main boom capacities	
When lifting over swingaway and/or jib combinations, deduct total weight of all load handling devices reeved over main boom nose directly from swingaway or jib capacity.	

Hook Blocks And Headache Balls	
25 USt (22,7 t), 2 sheave hook bloc	475 lb+ (215 kg+)
6.25 USt (5,7 t) headache ball	105 lb+ (48 kg+)
+Refer to rating plate for actual weight	
NOTE: All load handling devices and boom attachments are considered part of the load and suitable allowances MUST BE MADE for their combined weights. Weights are for Grove furnished equipment.	

Tire Inflation - Bar (PSI)			
Size (Front & Rear)	Load Range	Load Speed Index	Lifting Service, General Travel & Extended Travel
			Static & 2.5 MPH (4,0 KMh)
OUTRIGGER 17.5x25 E3/L-3	20 PR	--	110 (7,6)

STERLING CRANE



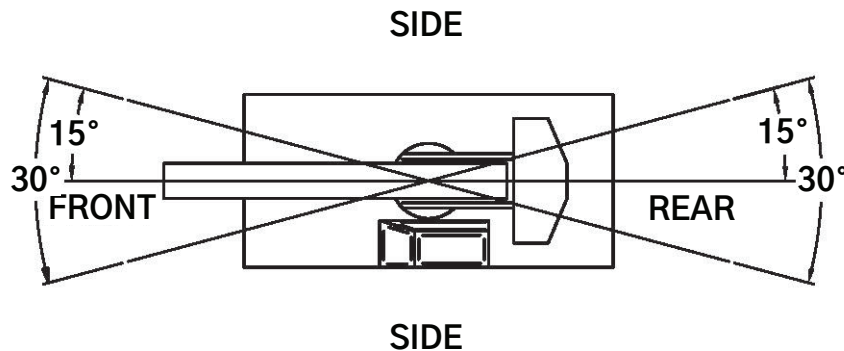
LOAD HANDLING

Capacity Reductions for Synthetic Rope Use

If synthetic rope is installed on the hoist, the following capacity reductions apply:

	Main Boom Charts	Extension Charts
Outriggers fully extended - 360° or retracted over front/rear	80 lb (36 kg)	0 lb (0 kg)
Outriggers retracted 360°	270 lb (122 kg)	N/A
On rubber	100 lb(45 kg)	N/A

Lifting Area Diagram



Line Pulls and Reeving Information

Hoists	Cable Specs.	Permissible Line Pulls	Nominal Cable Length
Main	<ul style="list-style-type: none"> - 5/8" (16 mm) 35 x 7 EEIPS+ - Unirope Python Dynamiq - Min. breaking strength: 62,500 lb (28 349 kg) 	12,500 lb (5670 kg)*	390 ft (119 m)

The approximate weight of 5/8" (16 mm) wire rope is 0.87 lb/ft (1.3 kg/m).

*With certain boom and hoist tackle combinations, the allowable line pull may be limited by hoist performance. Refer to Hoist Performance table for lift planning to ensure adequate hoist performance on drum rope layer required.