



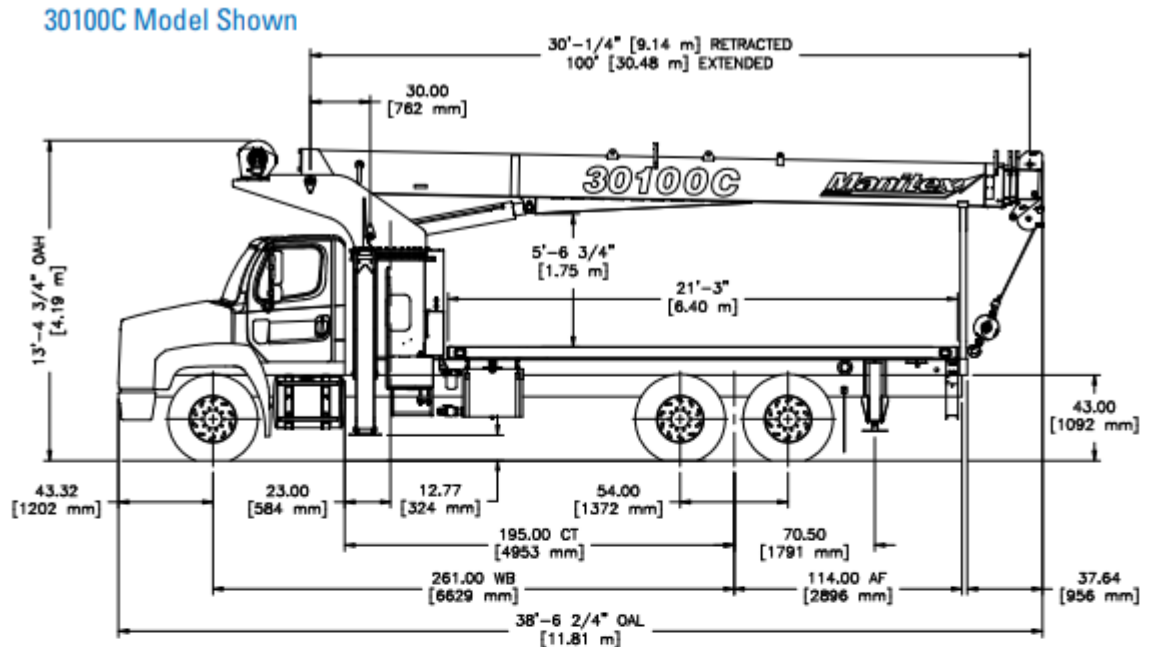
TRANSPORTATION SPECS – BOOM TRUCKS MANITEX MODEL 30100C – 30 TON CAPACITY

<u>COMPONENT WEIGHTS</u>	<u>LBS.</u>	<u>KGS.</u>
Complete Crane & Truck (2023 Kenworth T880)	45,450	20,616

<u>ADDITIONAL INFORMATION</u>	<u>LBS.</u>	<u>KGS.</u>
26' – 46' Swingaway Jib	1,220	553
13.6 Ton Block (Single Sheave)	274	124
7 Ton Ball	232	106



Dimensions



CRANE WEIGHTS

Total Crane 30102C A-Frame	22,212 lbs. (10,075 kg)
Total Crane 30102C Out & Down	23,040 lbs. (10,451 kg)
Total Crane -30100C A-Frame	22,485 lbs. (10,199 kg)
Total Crane -30100C Out & Down	23,047 lbs. (10,454 kg)
Flatbed 22 ft. (6.7 m):	2,552 lbs. (1,144 kg)
Fixed jib: 26 ft. (7.9 m):	832 lbs. (377 kg)
Telescoping jib: 26 ft. (7.92 m) to 46 ft. (14.0 m):	1,220 lbs. (553 kg)

TRUCK AXLE WEIGHT

Minimum truck axle weight - Front**	8,400 lbs. (3,810 kg)
Minimum truck axle weight - Rear**	8,400 lbs. (3,810 kg)
Front Axle Gross Weight Rating	18,000 lbs. (8,165 kg)
Rear Axle Gross Weight Rating	34,000 lbs. (15,422 kg)

**Minimum chassis weight is required to meet 85% stability requirements. Chassis data is general - not for engineering. Some dimensions depend on truck selection.
Notes: Additional axles required for federal bridge legal configuration - consult Manitex. Manitex highly recommends addition of a front stabilizer and may be required on some installations - consult Manitex.

CHASSIS DATA

Wheel Base (WB)	261 in. (6,629 mm)
Cab to Tandem (CT)	195 in. (4,877 mm)
After Frame (AF)	114 in. (2,896 mm)
Nominal frame width	34 in. (864 mm)
Frame Section Modulus at 180/360° area of operation*	30 in. ³ (491.6 cm ³) 110,000 psi (758,423 kPa)

*Frame selection modulus at 360° area of operation requires front bumper stabilizer.

Data published herein is intended as a guide only. Crane operation is subject to machine specific load charts and information.