



## TRANSPORTATION SPECS - Rough Terrain Cranes

### GROVE MODEL RT58B - 15 TON CAPACITY

#### COMPONENT WEIGHTS

	<u>LBS.</u>	<u>KGS.</u>
Complete Crane (1) (incl. block, ball & 20' A-frame jib)	44,000	19,958

#### ADDITIONAL INFORMATION

10 Ton Block	285	129
5 Ton Ball	250	113
20' A-Frame Jib	1,000	454
Main Load Line (1/2" x 280')	152	69

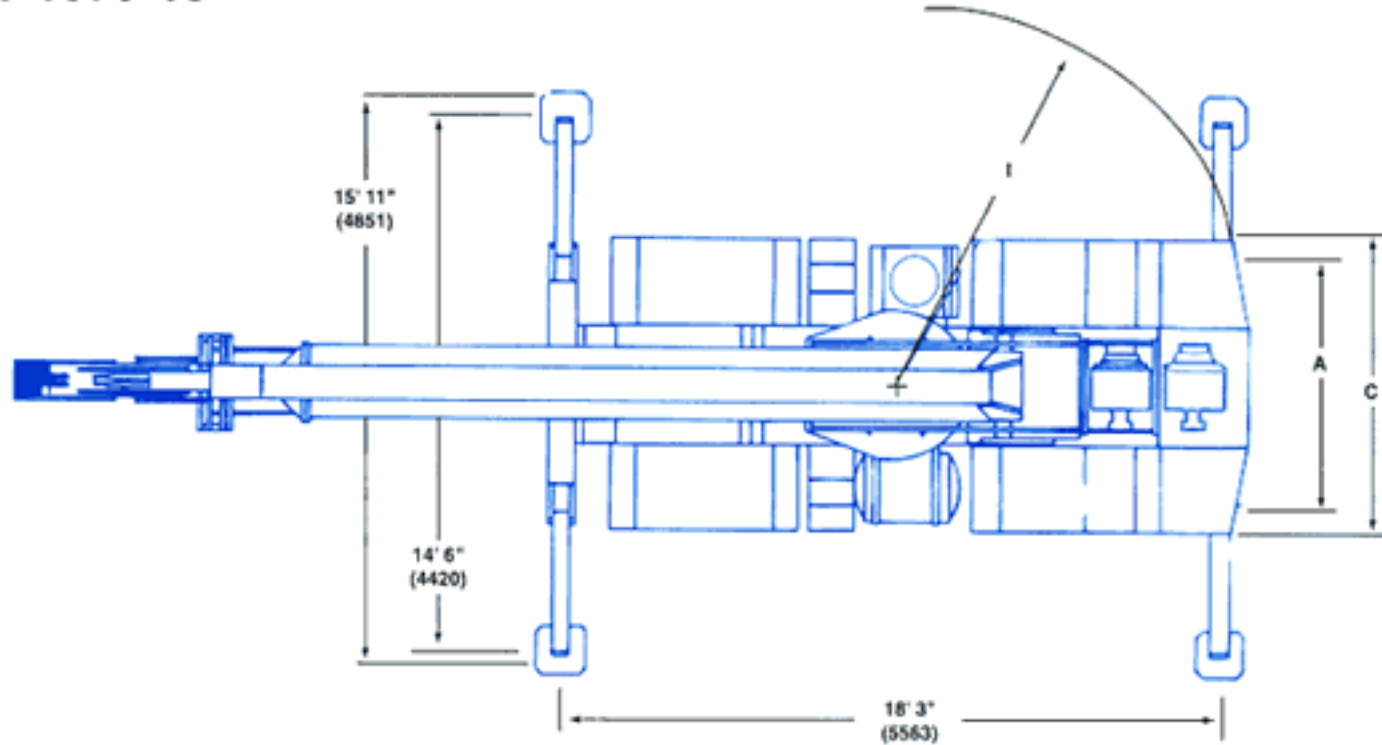
#### TRANSPORTATION

##### Alberta, British Columbia and Saskatchewan

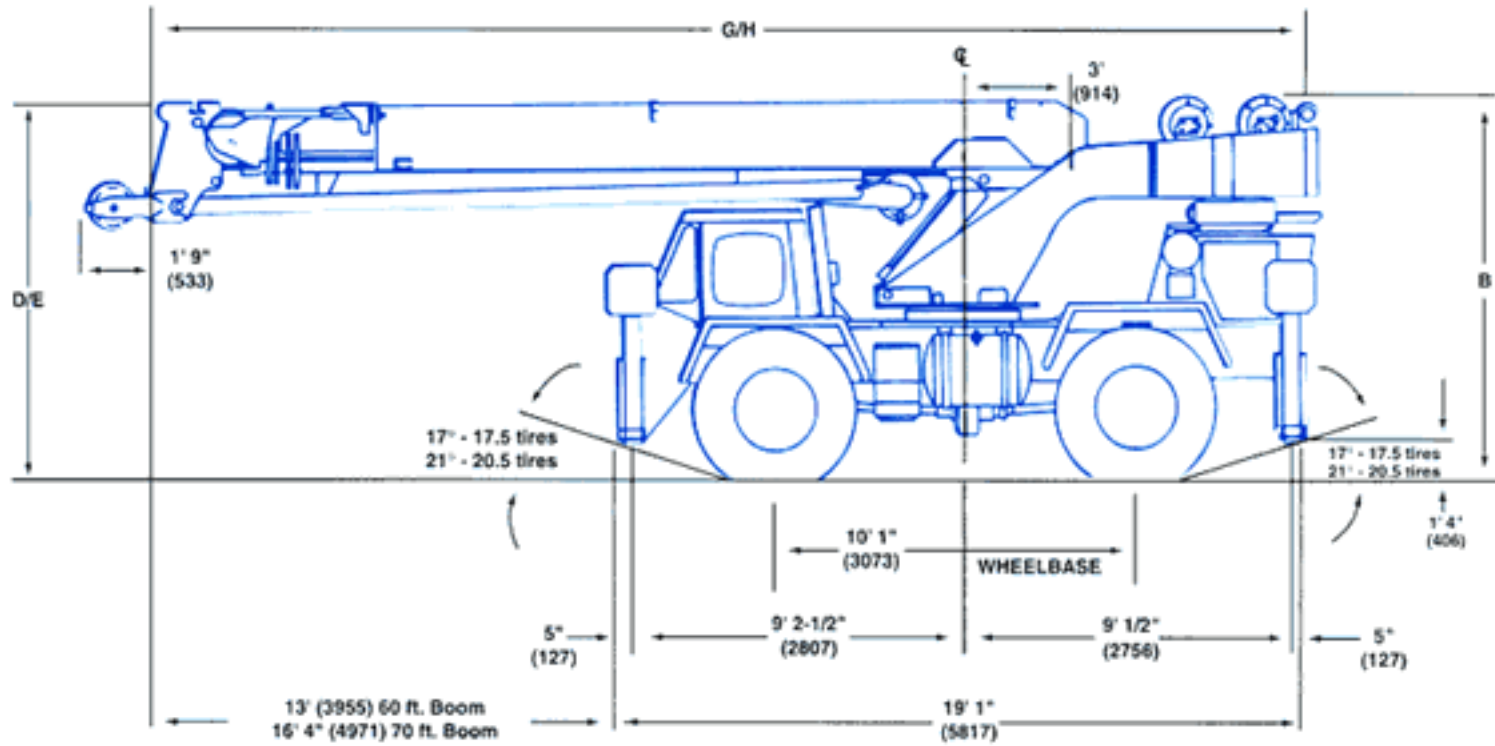
	<u>Weight</u>	<u>Trailer</u>
• Spring	(1)	Tri-Axle
• Summer & Winter	(1)	Tri-Axle or Tandem w/Permit

# STERLING CRANE

## Dimensions



TIRE SIZE	17.5 X 25	20.5 X 25
A (TRACK)	6' 6" (1981)	6' 9" (2057)
B (O.A.H)	10' 5" (3175)	10' 9" (3277)
C (O.A.W)	8' (2438)	8' 9" (2667)
D (60' BOOM)	10' 6" (3200)	10' 9" (3277)
E (70' BOOM)	NA	11' 6" (3505)
F GROUND CLEARANCE	1' 1" (330)	1' 4" (406)
G (60' BOOM)	30' 5" (9271) w/o Aux. Hoist 32' 5" (9881) w/ Aux. Hoist	
H (70' BOOM)	35' 9" (10 896)	
I (TAILSWING)	8' 5" (2565) w/o Aux. Hoist	
(60' BOOM)	10' 3" (3124) w/ Aux. Hoist	
(70' BOOM)	10' 3" (3124)	



Note: ( ) Reference dimensions in mm

Turning Radius ..... 16' 3" (4940 mm)

Front Axle Load ..... 20,850 lbs. (9460 kg)

Rear Axle Load ..... 22,495 lbs. (10 200 kg)

Gross Vehicle Weight ..... 43,345 lbs. (19 660 kg)