

STERLING CRANE



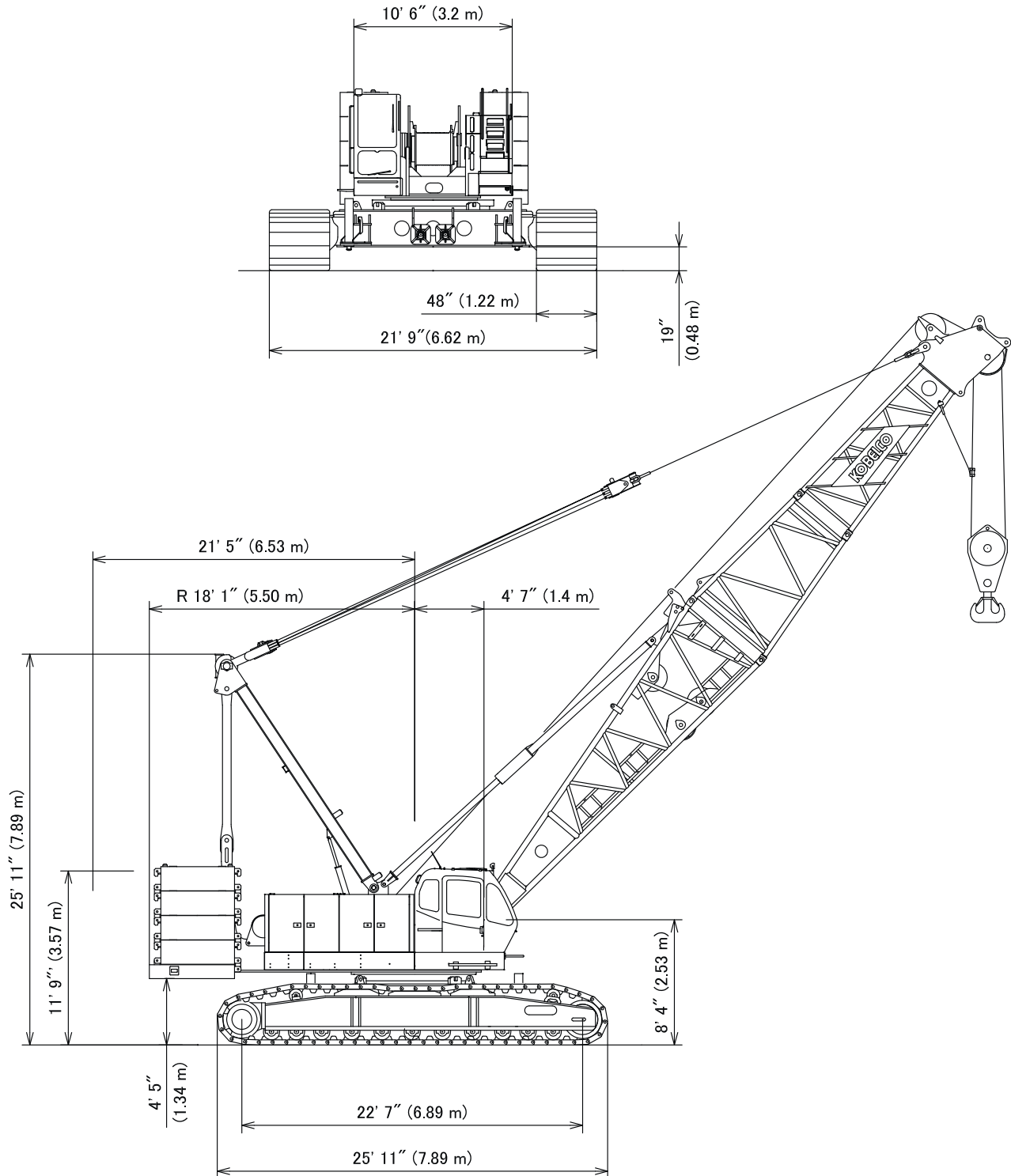
TRANSPORTATION SPECS - Crawler Cranes

KOBELCO MODEL CK1600-II - 160 TON CAPACITY

<u>COMPONENT WEIGHTS</u>				<u>LBS.</u>	<u>KGS.</u>	<u>Boom Min 50' to Max. 250'</u>	<u>LBS.</u>	<u>KGS.</u>
Complete Crane c/w 50' boom, full cwt, block & ball				311,941	141 496	OD 72" x 83"		
House, Carbody, Butt & Gantry - 50'11" x 11'3" x 10'2"				92,480	41 949	25' Butt Section - 26'4" x 6'6" x 7'11" 1 pc.	8,110	3 679
Counterweights:						10' Insert c/w Pendants 2 pc. ea.	1,390	630
Upper:						20' Insert c/w Pendants 2 pc. ea.	2,200	998
A Cwt	12'6"x6'1"x11"	1 pc.		17,640	8 001	40' Insert c/w Pendants 4 pc. ea.	3,770	1 710
B Cwt	5'9"x 3'2" x 1'9"	8 pc. ea.		11,020	4 9999	10' Taper c/w Pendants - 10'5" x 6'6" x 6'11" 1 pc.	1,190	540
C Cwt	5'9"x 3'2" x 10"	2 pc. ea.		5,510	2 499	15' Tip Section - 17'4" x 5' x 6'6"	4,100	1 860
Total Upper				116,820	52 989			
Carbody Cwt 5'9" x 7'1" x 1'7" 2 pcs. ea.				<u>11,030</u>	<u>5 003</u>			
Total Counterweight				138,880	62 996	<u>Fixed Jib Min. 40' to Max. 100'</u>		
Tracks 48" Shoes 25'11"x4'x4'1" ea.				36,160	16 402	OD 40" x 37"		
						15' Butt Section c/w strut - 16'8" x 3'4" x 5'3"	1,310	594
<u>ADDITIONAL WEIGHTS</u>						10' Insert c/w pendants 1 pc.	270	122
75 Ton 4 Sheave Block				2,850	1 293	20' Insert c/w pendants 3 pc. ea.	520	236
19 Ton Ball				1,311	595	15' Tip Section - 16'7" x 3'4" x 2'9"	620	281
Auxiliary Sheave 6'6" x 3'				650	295			
Cwt Self-Removal Cylinder 7'2"x5'9"x2'11"				3,700	1 678			
Translifter 3'5"x3'5"x1'2"				820	372			
Gantry c/w Spreader 19' x 4'5" x 3'				5,560	2 522			
Upper Spreader 6'9" x 2'11" x 1'2"				1,070	485			
Lower Spreader 3'9" x 3'1" x 1'				700	318			
Boom Backstop 22'7" x 11"				1,140	517			

STERLING CRANE

General Dimensions



STERLING CRANE

Dimension and Weight

Base Machine-1

Boom base with self-assembly sheave, Counterweight Self-Removal Cylinder, Translifter and Front, Rear, Boom hoist wire rope

Weight: 86,420 lbs (39,200 kg)

Base Machine-2

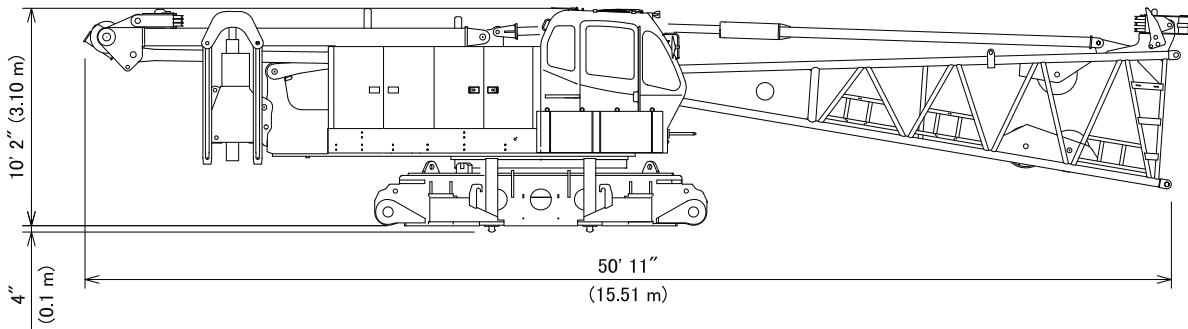
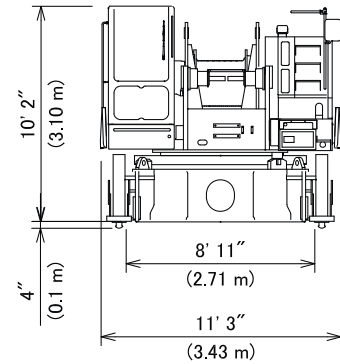
In addition Base Machine-1, optional Front/Rear Free-Fall Break equipped.

Weight: 88,180 lbs (40,000 kg)

Base Machine-3

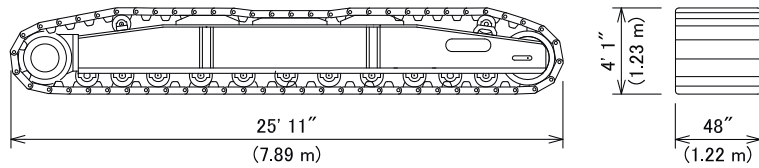
In addition Base Machine-2, optional Third drum and wire rope equipped.

Weight: 92,480 lbs (41,950 kg)



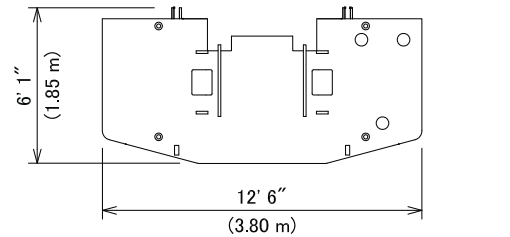
Crawler

Weight: 36,160 lbs (16,400 kg)



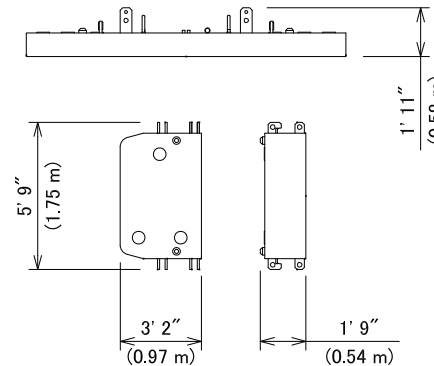
Counterweight (A)

Weight: 17,640 lbs (8,000 kg)



Counterweight (B)

Weight: 11,020 lbs (5,000 kg)

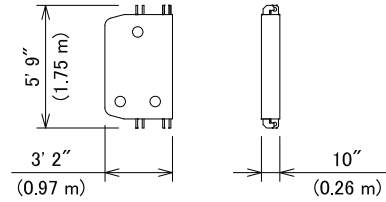


STERLING CRANE

Dimension and Weight

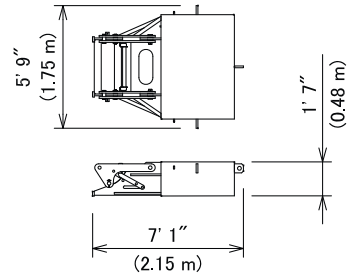
Counterweight (C) (optional)

Weight: 5,510 lbs (2,500 kg)



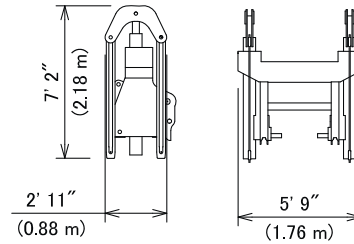
Carbody Weight (optional)

Weight: 11,030 lbs (5,000 kg)



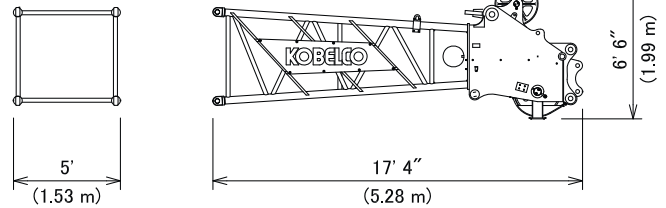
Counterweight Self-Removal Cylinder

Weight: 3,700 lbs (1,680 kg)



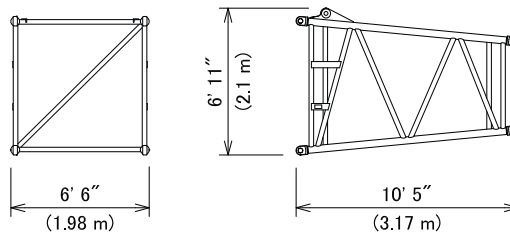
Boom Tip

Weight: 4,100 lbs (1,860 kg)
includes guy lines.



Taper Insert Boom

Weight: 1,190 lbs (540 kg)
includes cable roller.

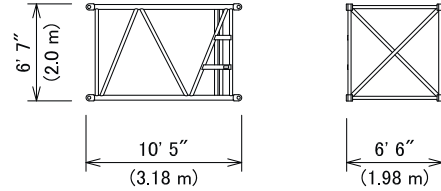


STERLING CRANE

Dimension and Weight

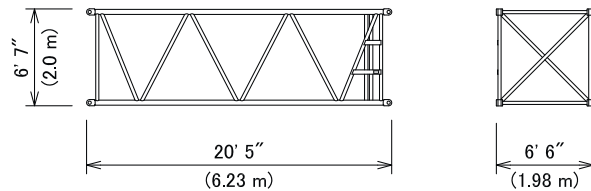
10 ft Insert Boom

Weight: 1,390 lbs (630 kg)
Includes cable roller and guy lines.



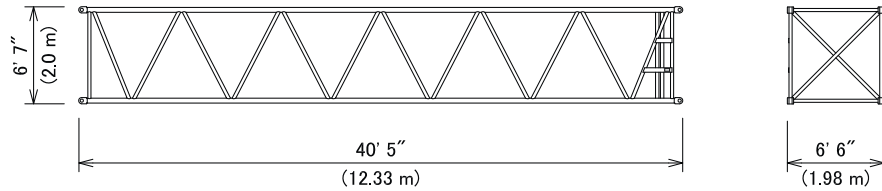
20 ft Insert Boom

Weight: 2,200 lbs (1,000 kg)
Includes cable roller and guy lines.



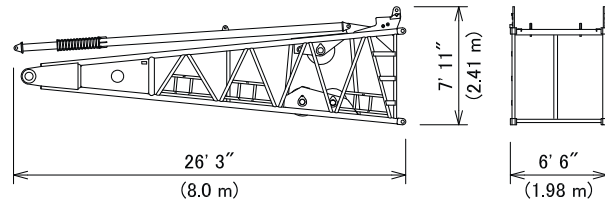
40 ft Insert Boom

Weight: 3,770 lbs (1,710 kg)
Includes cable roller and guy lines.



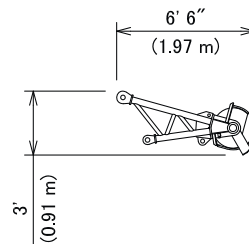
Boom Base with Backstop

Weight: 8,110 lbs (3,680 kg)



Auxiliary Sheave

Weight: 650 lbs (290 kg)



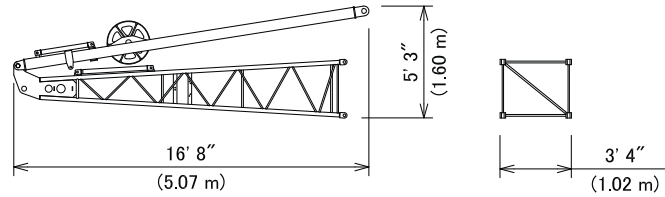
STERLING CRANE

Dimension and Weight

Jib Base with Strut

Weight: 2,270 lbs (1,030 kg)

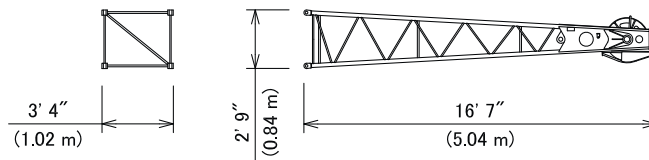
Includes guy lines.



Jib Tip

Weight: 690 lbs (310 kg)

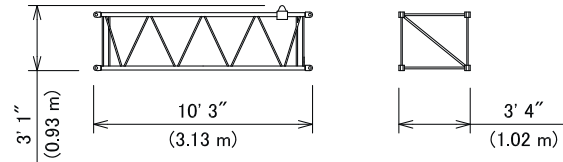
Includes cable roller



10 ft Insert Jib

Weight: 270 lbs (120 kg)

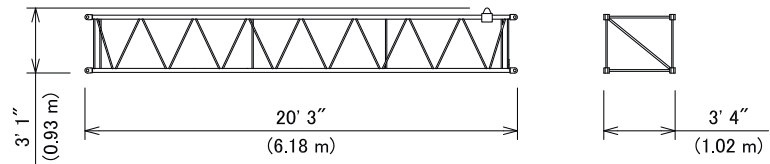
Includes cable roller



20 ft Insert Jib

Weight: 520 lbs (240 kg)

Includes cable roller and guy lines

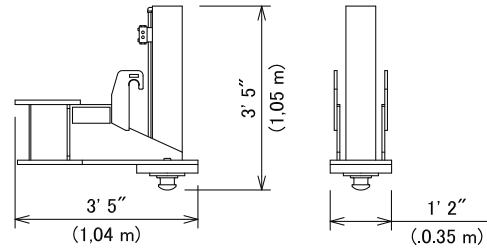


STERLING CRANE

Dimension and Weight

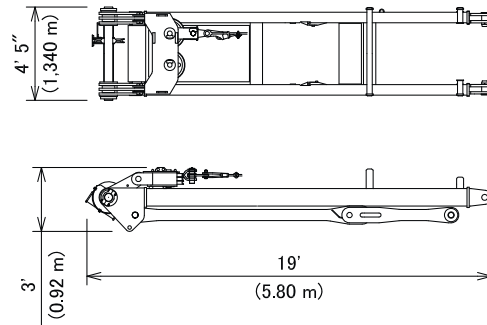
Translifter

Weight: 820 lbs (370 kg)



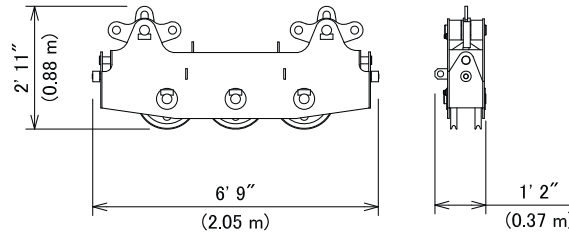
Gantry with Lower Spreader

Weight: 5,560 lbs (2,520 kg)



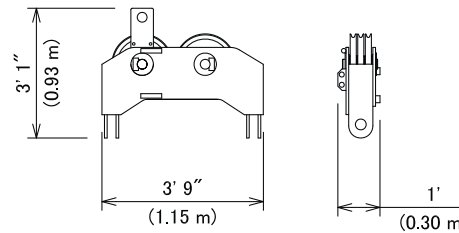
Upper Spreader

Weight: 1,070 lbs (485 kg)



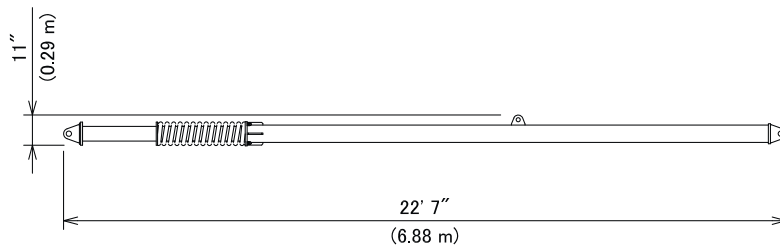
Lower Spreader

Weight: 700 lbs (320 kg)



Boom Backstop

Weight: 1,140 lbs (515 kg)



STERLING CRANE

Transportation Plan

250 ft boom and 100 ft jib

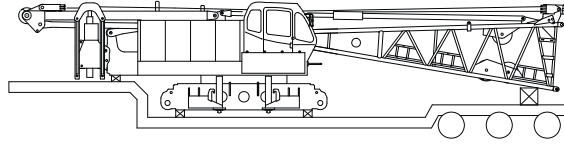
Description of item	Weight lbs (kg)	Trailer Loads						
		#1	#2	#3	#4	#5	#6	#7
Base Machine with Boom Base	86,420 (39,200)	1						
Crawler	36,160 (16,400)		1	1				
Counterweight (A)	17,640 (8,000)					1		
Counterweight (B)	11,020 (5,000)				3	2	3	
Counterweight (C)	5,510 (2,500)							2
Carbody Weight	11,030 (5,000)							2
10 ft Insert Boom and Guy Line	1,390 (630)				1	1		
20 ft Inser Boom and Guy Line	2,200 (1,000)						1	
40 ft Insert Boom and Guy Line	3,770 (1,710)		1	1	1	1		
Taper Insert Boom	1,190 (540)						1	
Boom Tip and Guy Line	4,100 (1,860)						1	
Jib Base and Guy Line	2,270 (1,030)							1
10 ft Inser Jib	270 (120)							1
20 ft Insert Jib and Guy Line	520 (240)							3
Jib Tip	690 (310)							1
Approx. Total Shipping Weight	lbs (kg)	86,420 (39,200)	39,930 (18,110)	39,930 (18,110)	38,220 (17,340)	44,840 (20,340)	40,550 (18,400)	37,870 (17,180)

Target of payload: 45,000 lbs weight, 48 ft long, 8 ft 6 inch width and 13 ft 6 inch height from ground
Above plan may vary by each state low or specification of trailers.

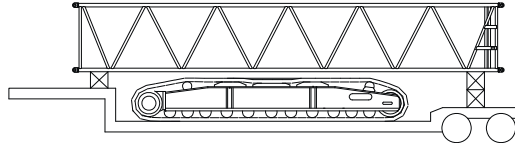
STERLING CRANE

Transportation Plan

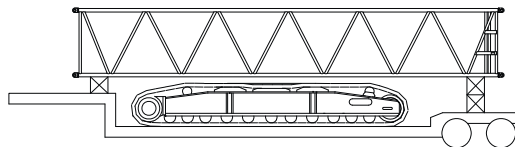
Trailer #1



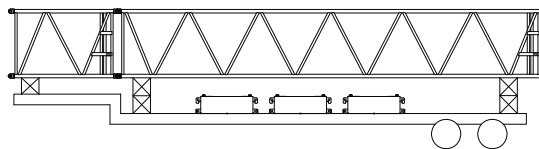
Trailer #2



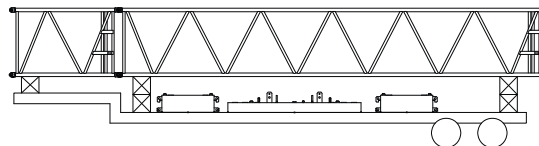
Trailer #3



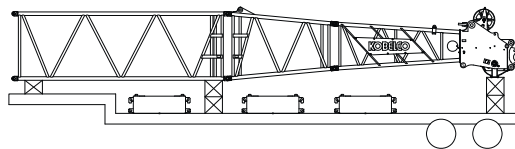
Trailer #4



Trailer #5



Trailer #6



Trailer #7

