



## TRANSPORTATION SPECS - All Terrain Cranes

### LIEBHERR MODEL LTM 1080/1 - 100 TON CAPACITY

#### COMPONENT WEIGHTS

	<u>LBS.</u>	<u>KGS.</u>
Complete Crane (1) (incl. 69.5 ton block, 17.5 ton block, jib & max. cwt.)	126,597	57 425
Main Unit c/w Outriggers (2) (incl. 17.5 t block, auxiliary winch, jib & 5.8 t cwt.)	*104,918	*47 591
Counterweight – Minimum (5.8 t & 0.8 t auxiliary winch)	12,787	5 800
Counterweight – Maximum (Includes auxiliary winch)	35,494	16 100

\*Actual scaled weight

#### ADDITIONAL INFORMATION

63 Ton Block, 3 Sheave	992	450
16 Ton Block, 1 Sheave	794	360
9 Ton Ball	300	136
34' – 62' 2 Stage Jib	2,900	1 315
Spare Tire	828	376
Main Load Line (17 mm x 250 M)	820	372

#### COUNTERWEIGHT

	<u>LBS.</u>	<u>KGS.</u>
#1 Fixed Slab	12,787	5 800
**Auxiliary Winch	1,764	800
#3 Removable Slab	7,275	3 300
#4 Removable Slab	9,480	4 300
#5 Removable Base Slab	4,189	1 900

\*\* If auxiliary winch (hoist gear #2) is removed, 0.8t is missing from CWT combination and replacement CWT 0.8t must be attached

Auxiliary Load Line (17 mm x 200 M)	656	298
-------------------------------------	-----	-----

#### TRANSPORTATION

Average Driving Speed	70 km/hr
-----------------------	----------

#### Alberta and Saskatchewan

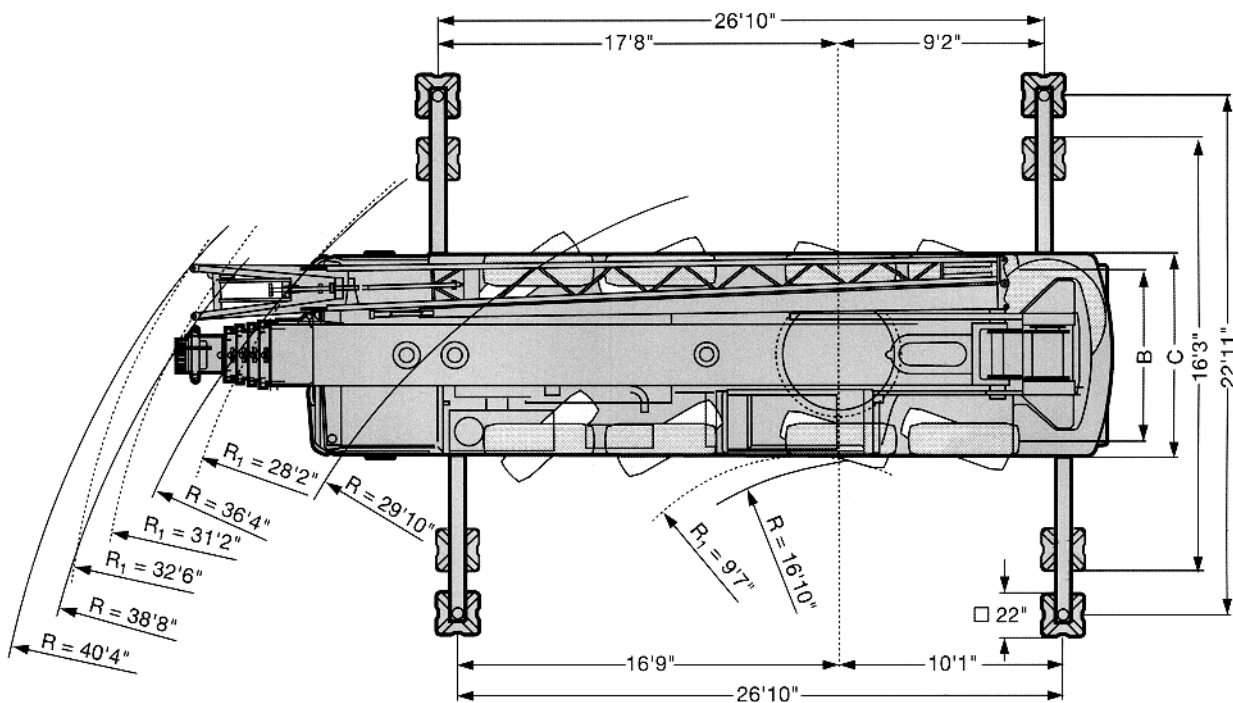
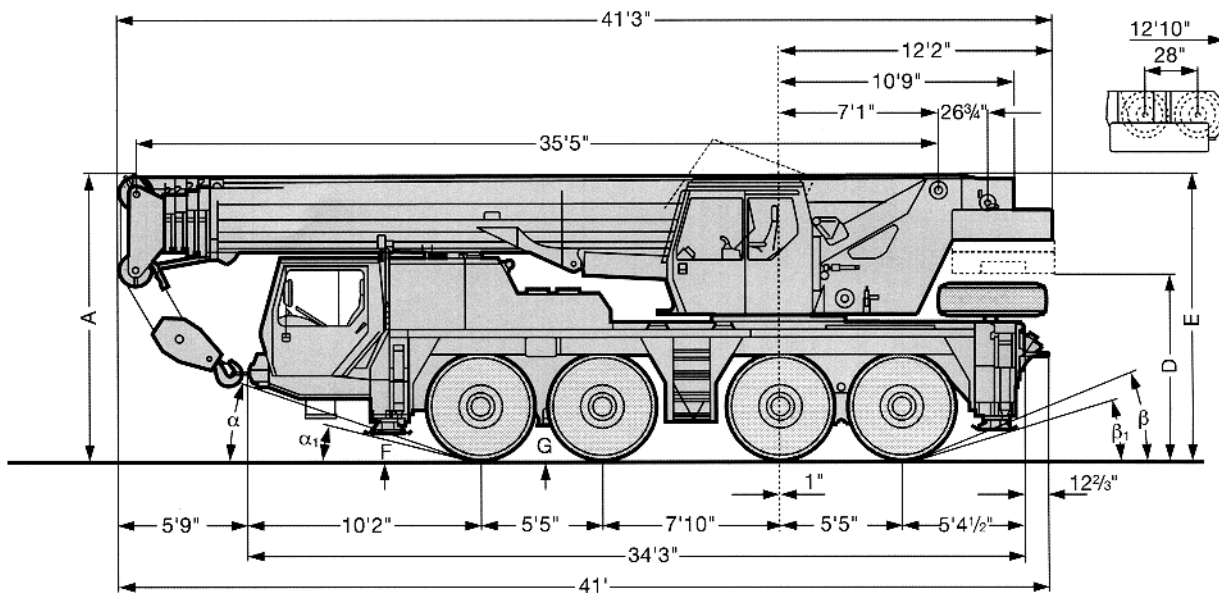
	<u>Weight</u>	<u>Trailer</u>
<input type="checkbox"/> Spring	(1)	64 wh
	(2)	48 wh
<input type="checkbox"/> Summer	(1)	48 wh
	(2)	40 wh
<input type="checkbox"/> Winter	(1)	40 wh
	(2)	28 wh

#### All Provinces / All Seasons

	<u>No</u>	<u>Trailer</u>
<input type="checkbox"/> 16,760 lb. cwt. & misc.	(1)	Tandem


# STERLING CRANE

## Dimensions



R<sub>1</sub> = All-wheel steering

## Dimensions

	A	A 4"	B	C	D	E**	F	G	$\alpha$	$\alpha_1$	$\beta$	$\beta_1$
 16.00 R 25	12'8"	12'4"	7'7"	9'	7'11-1/2"	12'8"	14 1/8"	15 1/3"	19°	16°	23°	16°

\* lowered

\*\* with folding jib