



TRANSPORTATION SPECS - Crawler Cranes

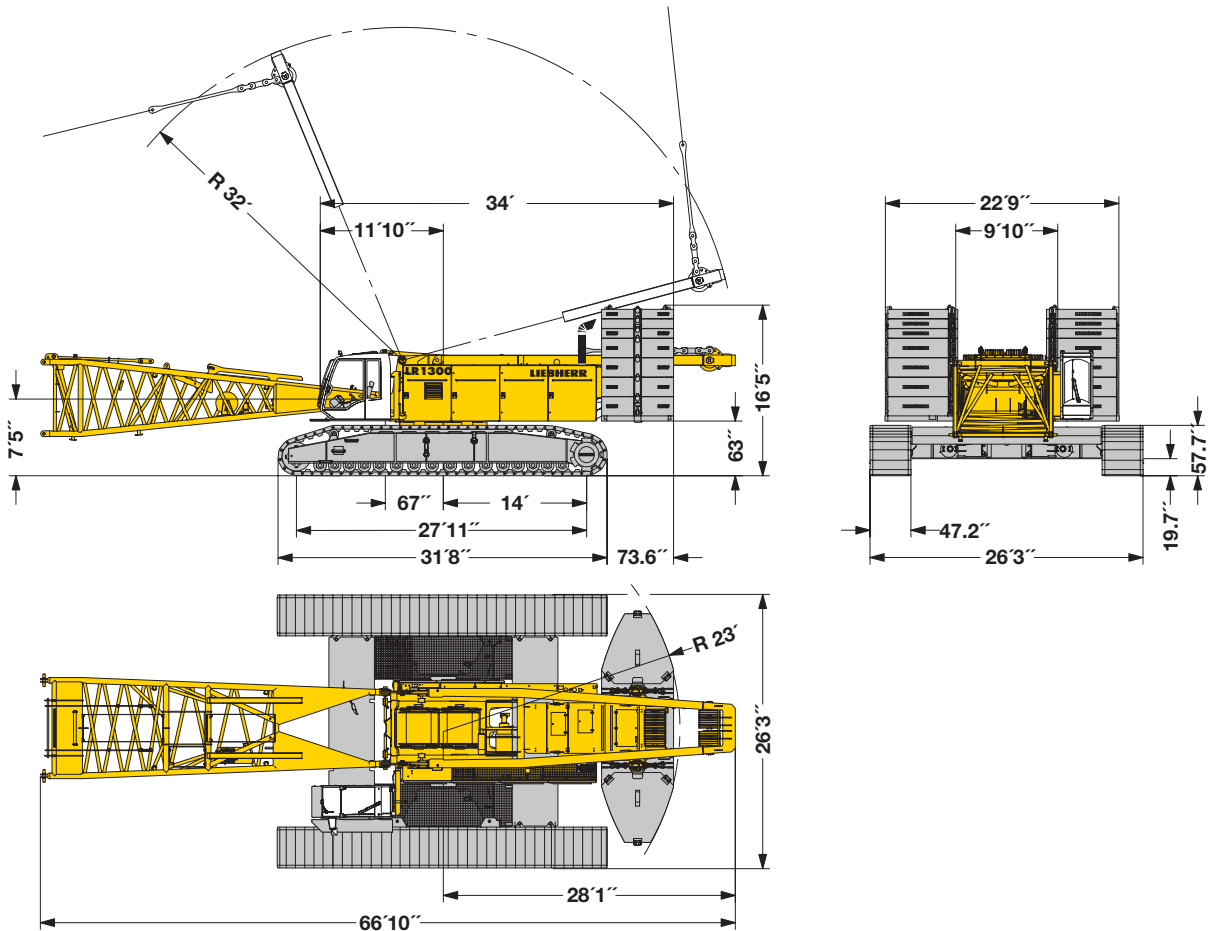
LIEBHERR MODEL LR 1300 - 330 TON CAPACITY

<u>COMPONENT WEIGHTS</u>	<u>LBS.</u>	<u>KGS.</u>	<u>Boom - Min. 20m – Max. 62m / 66' – 203'</u>	
			<u>LBS.</u>	<u>KGS.</u>
Complete Crane c/w 66' boom, central cwt. & block	636,265	288 608	Tubular 9'9" W x 8'1"H	
House & Carbody c/w W1 & W2 - 40' x 9'10" x 10'10"	98,105	44 500	Boom Butt 32.8' c/w W36m 33'10"	16,350 7 416
Tracks (each) – 31'8" x 4'8" x 4'10"	49,493	22 450	Boom 10' 10'8" 1 pc.	2,650 1 202
Counterweights:			Boom 20' 20'6" 1 pc.	4,200 1 905
Main:			Boom 40' 40'2" 3 pcs. Ea.	7,390 3 352
Base Slab 22'6" x 6'11" x 2'2"	30,864	14 000	Boom Tip 23' 26'11"	11,900 5 398
5t Slab 7' x 6'11" x 1'4" 6 pcs. Ea.	11,023	5 000		
10t Slab 7' x 6'11" x 1'4" 8 pcs. Ea.	22,046	10 000		
Carbody 18'2" x 5' x 14" 4 pcs. Ea.	31,526	14 300		
Total Counterweight	399,474	181 200	<u>LUFFING JIB – Min. 20m – 65m / 66' – 213'</u>	
<u>ADDITIONAL COMPONENTS</u>			Tubular 8' W x 6'3"H	
166t 5 Sheave Block	8,800	3 992	Butt 32.8' c/w up & lwr masts 38'6" x 8'9" x 10'10"	17,450 7 915
17.6t Single Sheave Block	5,300	2 404	Insert 10' 10'4" 1 pc.	1,350 612
Winch W1	33,100	15 014	Insert 20' 20'2" 1 pc.	2,100 953
Winch W2	33,100	15 014	Insert 40' 39'10" 3 pcs.	3,910 1 801
Luffing Winch	22,000	9 979	Tip Section 32.8' 35'3" x 8' x 7'2"	5,070 2 300

STERLING CRANE

Dimensions

Basic machine with undercarriage



Operating weight

The operating weight includes the basic machine with crawlers, 2 main winches 33,100 lbs and 66 ft main boom, consisting of A-frame, boom foot (33 ft), boom head (23 ft), boom extension (10 ft), 273,400 lbs basic counterweight, 125,700 lbs carbody counterweight and 661,400 lbs hook block.

Total weight _____ approx. 639,400 lbs

Ground pressure

Ground bearing pressure _____ 20.6 psi

Equipment

Main boom (No. 2821.xx) max. length _____ 322 ft
 High reach boom (No. 2821.xx and 2316.xx) _____ 404 ft
 Luffing jib (No. 2316.xx) max. length _____ 371 ft
 Max. combination _____ main boom 194 ft and luffing jib 371 ft
 Auxiliary jib _____ 79,400 lbs

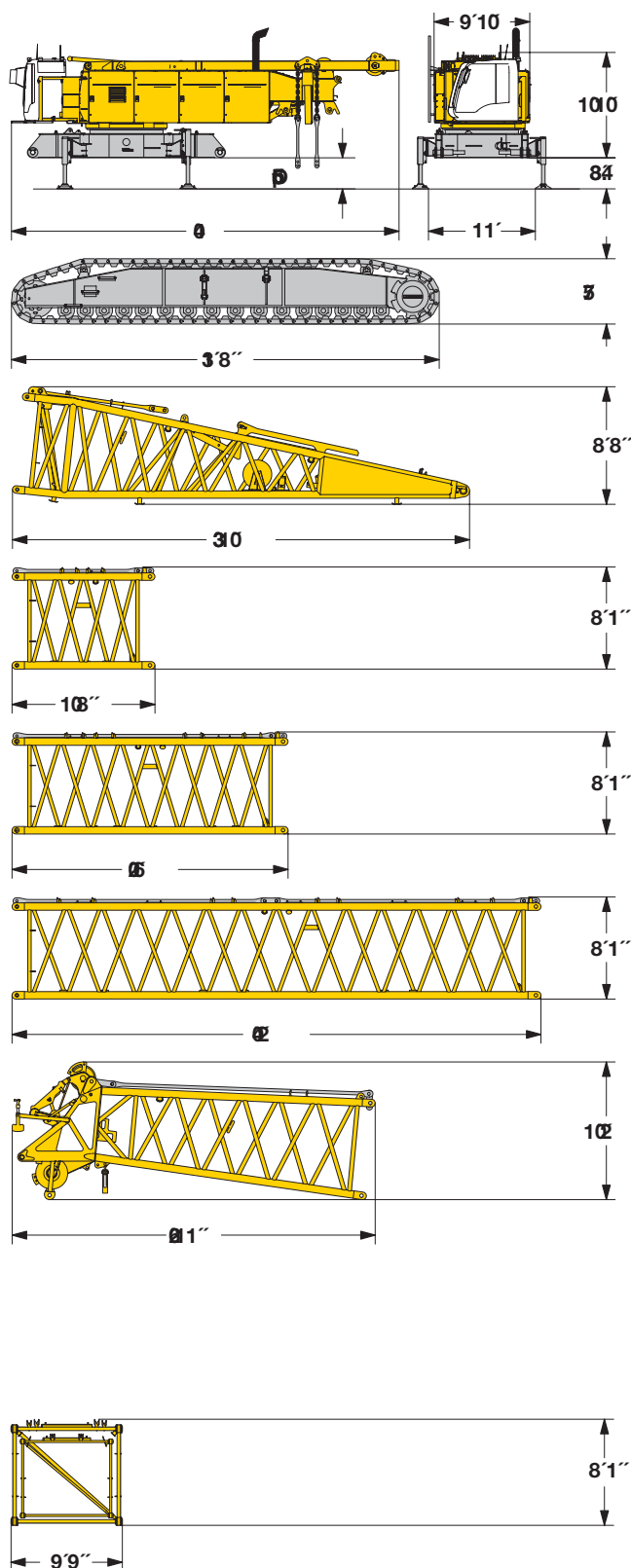
Remarks

1. The lifting capacities stated are valid for lifting operation only (corresponding with crane classification according to F.E.M. 1.001. crane group A1).
2. Crane standing on firm, horizontal ground.
3. The weight of the lifting device (hoisting ropes, hook block, shackle etc.) must be deducted from the gross lifting capacity to obtain a net lifting value.
4. Additional equipment on boom (e.g. boom walkways, auxiliary jib) must be deducted to get the net lifting capacity.
5. For max. wind speed please refer to lift chart in operator's cab or manual.
6. Working radii are measured from center of swing and under load.
7. The lifting capacities are valid for 360 degrees of swing.
8. Calculation of stability under load is based on 75% tipping load, ANSI B 30.5 and ISO 4305 Table 2.
9. The structures are calculated according to F.E.M. 1.001 - 1998 (EN 13001-1; EN 13001-2).

STERLING CRANE

Transport dimensions and weights

Basic machine and boom (No. 2821.xx)



Basic machine

with A-frame, 2x 33,100 lbs crane winches, without boom foot, hoisting ropes, basic counterweight and crawlers

Width	9'10"
Weight	92,160 lbs

Crawler

Flat track shoes	47.2"
Width	55.1"
Weight	49,300 lbs

Boom foot (No. 2821.30)

Width	9'9"
Weight without winch	12,700 lbs
Weight incl. winch and rope	16,350 lbs

Boom section (No. 2821.24) 10 ft

Width	9'9"
Weight*	2,650 lbs

Boom section (No. 2821.24) 20 ft

Width	9'9"
Weight*	4,200 lbs

Boom section (No. 2821.24) 40 ft

Width	9'9"
Weight*	7,390 lbs

Boom head (No. 2821.24)

Width	9'9"
Weight*	11,900 lbs

Boom - luffing jib transport option

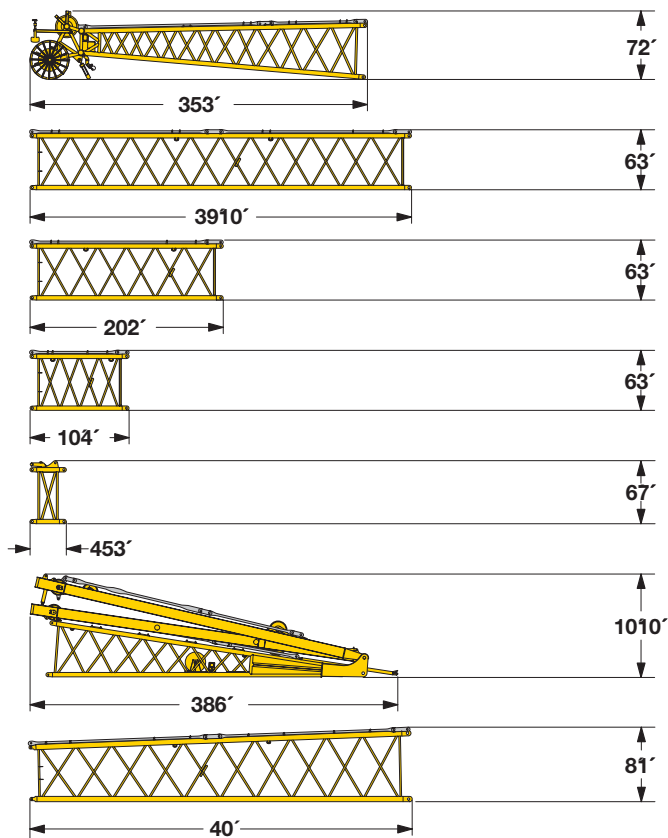
No. 2821.xx/2316.xx	40/40	20/20	30/30 ft
Length	41'	20'6"	10'8"
Weight*	11,360	6,285	3,990 lbs

*) Including pendants

STERLING CRANE

Transport dimensions and weights

Luffing jib (No. 2316.xx)



Luffing jib head (No. 2316.20)

Width 8'
Weight* 5,070 lbs

Luffing jib section (No. 2316.20) **40 ft**

Width 8'
Weight* 3,970 lbs

Luffing jib section (No. 2316.20) **20 ft**

Width 8' mm
Weight* 2,100 lbs

Luffing jib section (No. 2316.20) **10 ft**

Width 8'
Weight* 1,350 lbs

L-boom jib section (No. 2316.20) **39.4 inch**

Width 8'
Weight* 1,410 lbs

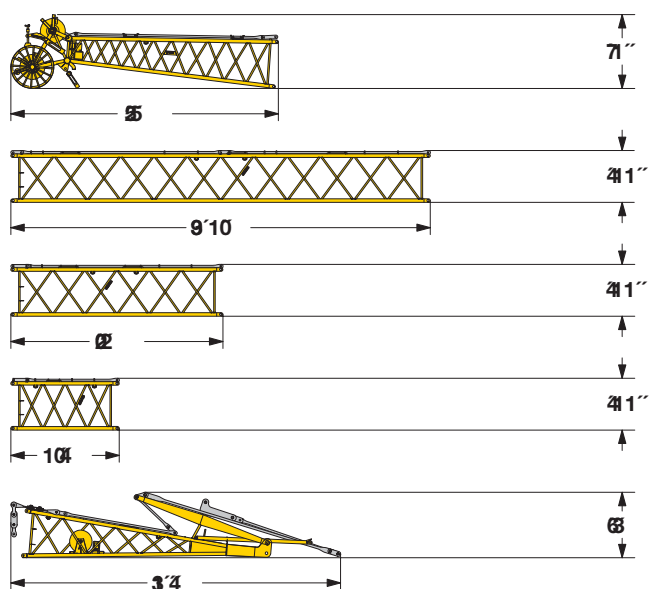
Luffing jib foot with A-frames (No. 2316.22)

Width 8'9"
Weight* 17,450 lbs

L-boom sect. tapered (No. 2821/2316.24) **40 ft**

Width 9'9" mm
Weight* 5,950 lbs

Fixed jib (No. 1713.xx)



Fixed jib head (No. 1713.21)

Width 6'
Weight* 3,030 lbs

Luffing jib section (No. 1713.18) **40 ft**

Width 6'
Weight* 2,520 lbs

Luffing jib section (No. 1713.18) **20 ft**

Width 6'
Weight* 1,400 lbs

Luffing jib section (No. 1713.18) **10 ft**

Width 6'
Weight* 930 lbs

Fixed jib foot with A-frame (No. 1713.22)

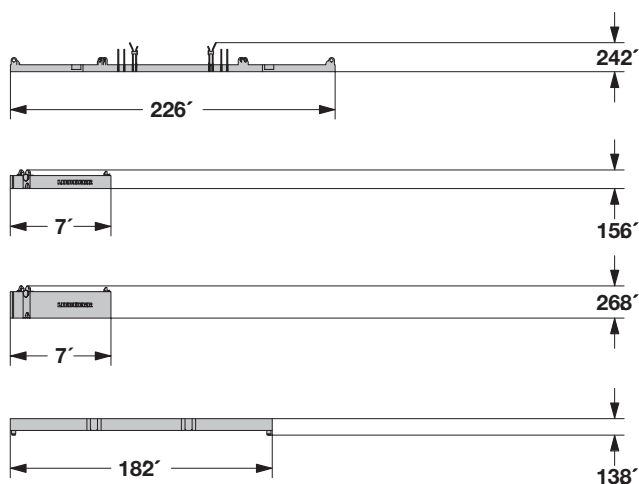
Width 8'
Weight* 5,070 lbs

*) Including pendants

STERLING CRANE

Transport dimensions and weights

Counterweights



Counterweight

Width 6'11"
Weight 32,000 lbs

1x

Counterweight

Width 6'11"
Weight 11,050 lbs

6x

Counterweight

Width 6'11"
Weight 22,050 lbs

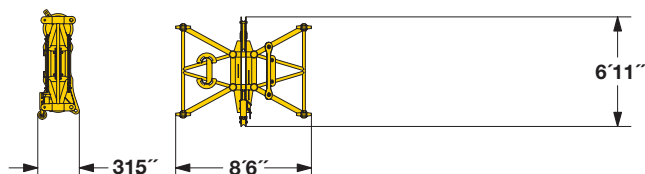
8x

Carbody counterweight

Width 5'
Weight 31,420 lbs

4x

Mid fall (optional)

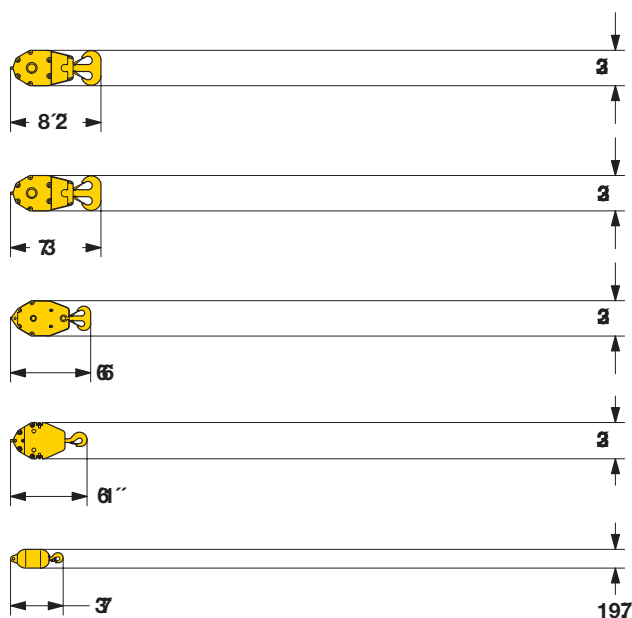


Mid fall section (No. 2316.25)

Width 8'
Weight 1,550 lbs

1.64 ft

Hooks



661,400 lbs hook block - 11 sheaves

Width 34.6'' 48.4''
Weight 7,050 12,130 lbs

330,700 lbs hook block - 5 sheaves

Width 19.7'' 26'' 32.3''
Weight 3,500 6,200 8,800 lbs

220,500 lbs hook block - 3 sheaves

Width 13.4'' 19'' 24.4''
Weight 2,400 4,500 6,600 lbs

110,200 lbs hook block - 1 sheave

Width 11'' 16.1'' 21.3''
Weight 1,800 3,500 5,300 lbs

35,300 lbs single hook

Width 19.7''
Weight 2,000 lbs