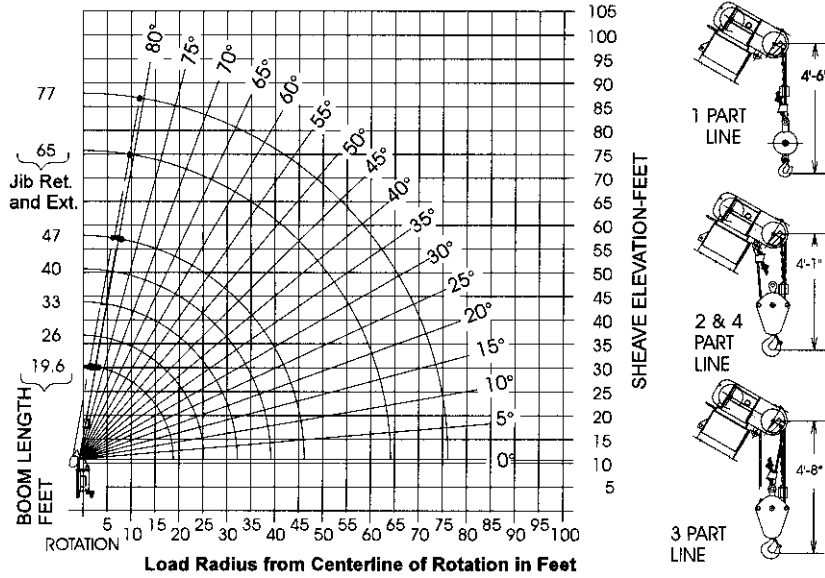




LIFTING CHARTS - Boom Trucks

USTC MODEL 1700JBT - 17 TON CAPACITY

47 FOOT BOOM



RATED LIFTING CAPACITIES IN POUNDS					
LOAD RADIUS FEET	BOOM LENGTH IN FEET				
	19.6	26	33	40	47
5	34000				
10	23000	19000	18000	17000	16000
15	16000	15000	14500	13000	11500
20		11200	10500	9500	8500
25		8400	7800	7400	6800
30			7200	6400	5800
35				5800	4700
40					4000
45					3500

STERLING CRANE

47 FOOT BOOM

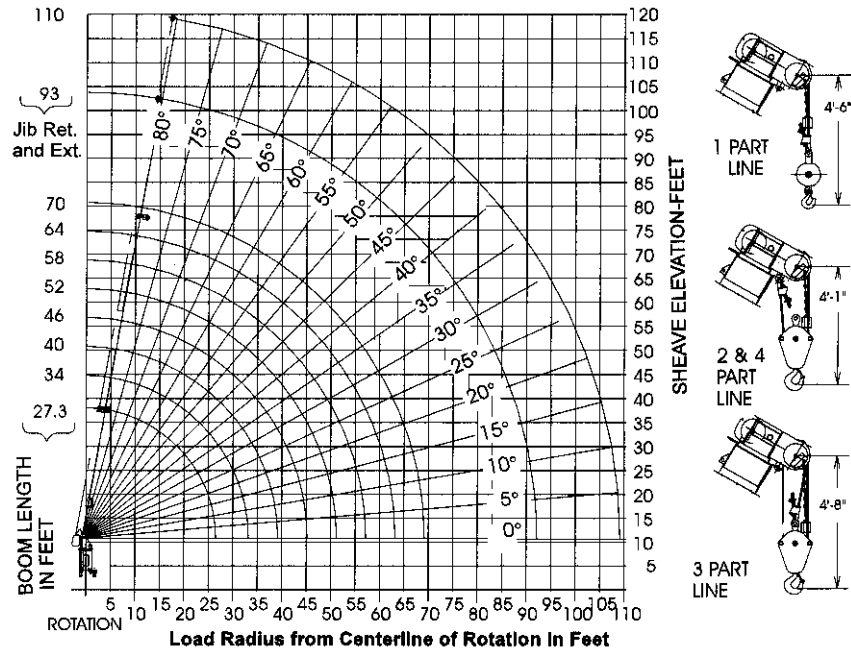
RATED JIB LIFTING CAPACITIES IN POUNDS				
18-30 FT. 2 SECTION JIB			18 FT. FIXED JIB	
MINIMUM BOOM ANGLE	JIB FULLY RETRACTED	JIB FULLY EXTENDED	MINIMUM BOOM ANGLE	
80°	6200	3500	80°	6300
75°	4800	2800	75°	4900
70°	3700	2300	70°	3800
65°	3000	1900	65°	3100
60°	2500	1600	60°	2600
55°	2100	1400	55°	2200
50°	1900	1200	50°	2000
45°	1700	1000	45°	1800
40°	1600	900	40°	1700
35°	1500	850	35°	1600
30°	1400	800	30°	1500
25°	1300	750	25°	1400
20°	1200	700	20°	1300
15°	1100	650	15°	1200

WEIGHT REDUCTION FOR LOAD HANDLING DEVICES

Headache Ball	130 lbs.
Hook Block (Single Sheave)	220 lbs.
Hook Block (Double Sheave)	300 lbs.
2-Section Jib Stowed	75 lbs.
2-Section Jib Erected (Retracted)	900 lbs.
2-Section Jib Erected (Extended)	1100 lbs.
1-Section Jib Stowed	50 lbs.
1-Section Jib Erected	700 lbs.

STERLING CRANE

70 FOOT BOOM



RATED LIFTING CAPACITIES IN POUNDS								
LOAD RADIUS FEET	BOOM LENGTH IN FEET							
	27.3	34	40	46	52	58	64	70
5	34000							
10	21000	17000	16500	16000	15500	15000		
15	15000	14000	13000	12000	11000	10500	10000	9500
20	10500	10000	9500	9000	8500	8000	7600	7200
25	7700	7500	7300	7100	6800	6500	6200	5800
30		6400	6100	5800	5500	5200	5000	4800
35			5000	4800	4600	4400	4200	4100
40				4200	4000	3800	3600	3500
45				3500	3200	3000	3000	3000
50					2900	2700	2600	2600
55						2400	2400	2300
60							2000	1900
65								1700

STERLING CRANE

70 FOOT BOOM

RATED JIB LIFTING CAPACITIES IN POUNDS				
23-40 FT. 2 SECTION JIB			23 FT. FIXED JIB	
MINIMUM BOOM ANGLE	JIB FULLY RETRACTED	JIB FULLY EXTENDED	MINIMUM BOOM ANGLE	
80°	4300	2500	80°	4400
75°	3400	1900	75°	3500
70°	2700	1600	70°	2800
65°	2100	1300	65°	2200
60°	1800	1000	60°	1900
55°	1400	850	55°	1500
50°	1200	750	50°	1300
45°	1000	600	45°	1200
40°	900	550	40°	1100
35°	700		35°	900

WEIGHT REDUCTION FOR LOAD HANDLING DEVICES

Headache Ball	130 lbs.
Hook Block (Single Sheave)	220 lbs.
Hook Block (Double Sheave)	300 lbs.
2-Section Jib Stowed	75 lbs.
2-Section Jib Erected (Retracted)	900 lbs.
2-Section Jib Erected (Extended)	1100 lbs.
1-Section Jib Stowed	50 lbs.
1-Section Jib Erected	700 lbs.

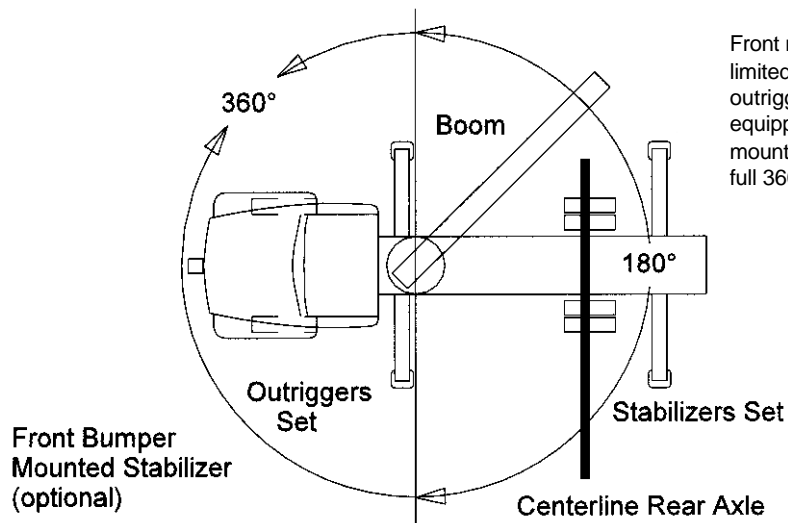
STERLING CRANE

47 AND 70 FOOT BOOM

PERMISSIBLE ROPE PULL		
Number Parts Line	9/16" Dia. 6x37 IWR IPS Class	9/16" Dia. No Spin 18.5 T. Nom. Strength
SINGLE	5500 lbs.	7500 lbs.
TWO	17000 lbs.	15000 lbs.
THREE	25500 lbs.	22500 lbs.
FOUR	34000 lbs.	30000 lbs.
FIVE		34000 lbs.

HOIST SPECIFICATIONS – BRADEN PD12C				
Performance @ 3000 PSI	Low Speed – 39 gpm		High Speed – 63 gpm	
	Line Speed	Line Speed	Line Speed	Line Pull
1 ST LAYER	140 fpm	230 fpm	7000 lbs.	
2 ND LAYER	155 fpm	255 fpm	6315 lbs.	
3 RD LAYER	170 fpm	285 fpm	5750 lbs.	
4 TH LAYER	188 fpm	304 fpm	5273 lbs.	

AREA OF OPERATION

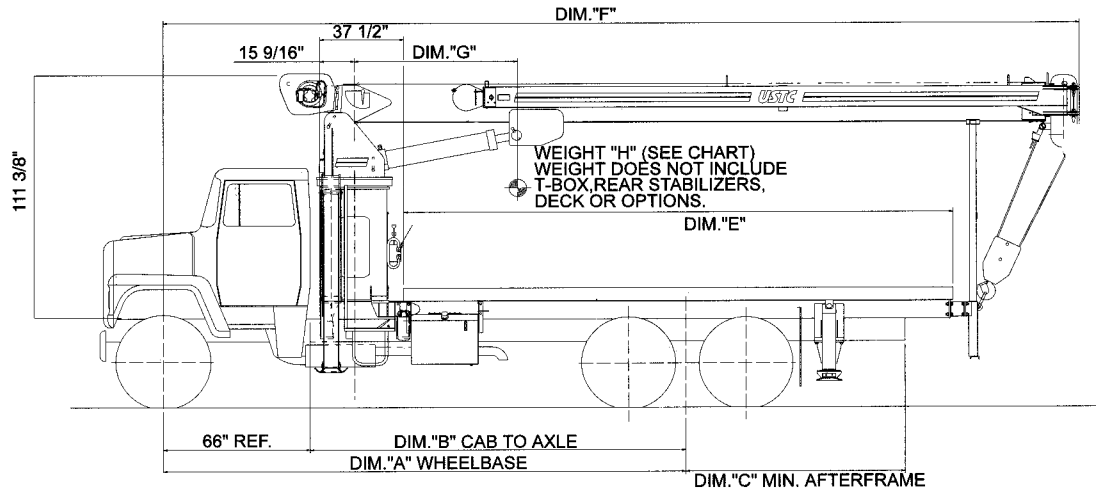


Front mount crane operation is limited to 180° outrigger to outrigger over rear unless equipped w/optional front bumper mounted stabilizer which permits full 360° area of operation.

STERLING CRANE

FRONT MOUNT TANDEM AXLE

Min. F.A.W.R.: 14,400 #
 Min. R.A.W.F.: 34,000 #
 Truck Frame: 15.9 in.³ S.M. on
 110,000 psi
 Consult factory for rear mount
 configuration, recommended
 truck requirements, and 180°
 and 360° Area of Operation.



	DIM. "A"	DIM. "B"	DIM. "C"	DIM. "D"	DIM. "E"	DIM. "F"	DIM. "G"	DIM. "H" WET
BOOM LENGTH	MIN. WHEELBASE	MIN. CAB TO AXLE	MIN. AFTERFRAME	MAX. CAB HEIGHT	MIN. DECK LENGTH	CL FRT. AXLE TO BOOM TIP	CENTER OF GRAVITY LOC	(SEE NOTE ON DRAWING)
47 ft.	210"	144"	75"	68 1/2"	16 ft.	318 9/16" (26'-6 9/16")	38.45"	11,150 lbs.
70 ft.	234"	168"	75"	68 1/2"	20 ft.	410 9/16" (34'-2 9/16")	65.44"	12,329 lbs.

